

Product datasheet for **TA341890**

ATP1B4 Rabbit Polyclonal Antibody

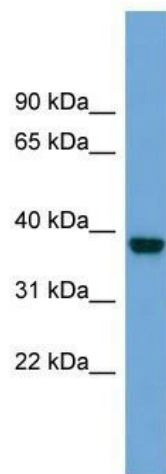
Product data:

Product Type:	Primary Antibodies
Applications:	WB
Recommended Dilution:	WB
Reactivity:	Human
Host:	Rabbit
Isotype:	IgG
Clonality:	Polyclonal
Immunogen:	The immunogen for anti-ATP1B4 antibody: synthetic peptide directed towards the middle region of human ATP1B4. Synthetic peptide located within the following region: ACQFKRSFLKNCSGLEDPTFGYSTGQPCILLKMNRIVGFPELGDPVKVS
Formulation:	Liquid. Purified antibody supplied in 1x PBS buffer with 0.09% (w/v) sodium azide and 2% sucrose. <i>Note that this product is shipped as lyophilized powder to China customers.</i>
Concentration:	lot specific
Conjugation:	Unconjugated
Storage:	Store at -20°C as received.
Stability:	Stable for 12 months from date of receipt.
Predicted Protein Size:	41 kDa
Gene Name:	ATPase Na ⁺ /K ⁺ transporting family member beta 4
Database Link:	NP_036201 Entrez Gene 23439 Human Q9UN42



[View online »](#)

Background:	This gene has been found in all vertebrate genomes sequenced to date. However, This gene has undergone a change in function in placental mammals compared to other species. Specifically, in fish, avian, and amphibian species, This gene encodes plasma membrane-bound beta-subunits of Na,K-ATPase. In placental mammals, The encoded protein interacts with The nuclear transcriptional coregulator SKIP and may be involved in The regulation of TGF-beta signaling. Two transcript variants encoding different isoforms have been found for This gene. [provided by RefSeq, Mar 2010]
Synonyms:	(Na ⁺); ATPase; beta 4 polypeptide; K ⁺ transporting; K-ATPase beta-m subunit; OTTHUMP00000023940; X
Note:	Immunogen Sequence Homology: Dog: 100%; Pig: 100%; Rat: 100%; Horse: 100%; Human: 100%; Mouse: 100%; Bovine: 100%; Rabbit: 100%; Guinea pig: 100%
Protein Families:	Transmembrane
Protein Pathways:	Cardiac muscle contraction

Product images:

WB Suggested Anti-ATP1B4 Antibody Titration:
0.2-1 ug/ml; Positive Control: COLO205 cell lysate