

Product datasheet for **TA341889**

TMED3 Rabbit Polyclonal Antibody

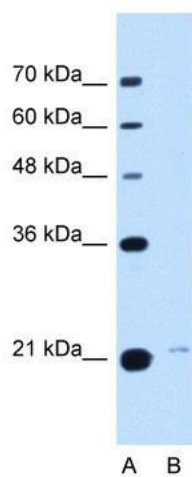
Product data:

Product Type:	Primary Antibodies
Applications:	WB
Recommended Dilution:	WB
Reactivity:	Human
Host:	Rabbit
Isotype:	IgG
Clonality:	Polyclonal
Immunogen:	The immunogen for anti-TMED3 antibody: synthetic peptide directed towards the C terminal of human TMED3. Synthetic peptide located within the following region: DRARAEDLNSRVSYWSVGETIALFVVSFSQVLLKSFTEKRPISRVAHS
Formulation:	Liquid. Purified antibody supplied in 1x PBS buffer with 0.09% (w/v) sodium azide and 2% sucrose. <i>Note that this product is shipped as lyophilized powder to China customers.</i>
Concentration:	lot specific
Conjugation:	Unconjugated
Storage:	Store at -20°C as received.
Stability:	Stable for 12 months from date of receipt.
Predicted Protein Size:	25 kDa
Gene Name:	transmembrane p24 trafficking protein 3
Database Link:	NP_031390 Entrez Gene 23423 Human Q9Y3Q3
Background:	The function remains known.
Synonyms:	C15orf22; P24B; p26
Note:	Immunogen Sequence Homology: Human: 100%; Rat: 93%; Horse: 93%; Bovine: 93%; Pig: 86%; Mouse: 86%; Guinea pig: 86%; Dog: 79%; Rabbit: 79%
Protein Families:	Transmembrane



[View online »](#)

Product images:



WB Suggested Anti-TMED3 Antibody Titration: 2.5 ug/ml; Positive Control: HepG2 cell lysate