

Product datasheet for **TA341888**

Nurim (NRM) Rabbit Polyclonal Antibody

Product data:

Product Type:	Primary Antibodies
Applications:	WB
Recommended Dilution:	WB
Reactivity:	Human
Host:	Rabbit
Isotype:	IgG
Clonality:	Polyclonal
Immunogen:	The immunogen for anti-NRM antibody: synthetic peptide directed towards the N terminal of human NRM. Synthetic peptide located within the following region: MAPALLLIPAALASFILAFGTGVEFVRFTSLRPLLGGIPESGGPDARQGW
Formulation:	Liquid. Purified antibody supplied in 1x PBS buffer with 0.09% (w/v) sodium azide and 2% sucrose.
Concentration:	lot specific
Conjugation:	Unconjugated
Storage:	Store at -20°C as received.
Stability:	Stable for 12 months from date of receipt.
Predicted Protein Size:	29 kDa
Gene Name:	nurim (nuclear envelope membrane protein)
Database Link:	NP_009174 Entrez Gene 11270 Human Q8IXM6
Background:	The protein encoded byThis gene contains transmembrane domains and resides withinThe inner nuclear membrane, where it is tightly associated withThe nucleus.This protein shares homology with isoprenylcysteine carboxymethyltransferase enzymes. Alternative splicing results in multiple transcript variants that encode different protein isoforms. [provided by RefSeq, Jul 2012]
Synonyms:	NRM29

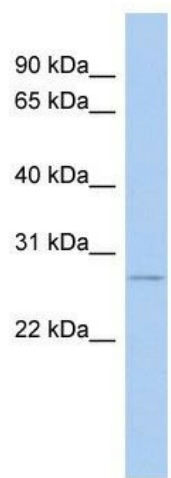


[View online »](#)

Note: Immunogen Sequence Homology: Pig: 100%; Human: 100%; Mouse: 100%; Rat: 93%; Horse: 93%; Dog: 86%; Bovine: 79%; Rabbit: 79%

Protein Families: Transmembrane

Product images:



WB Suggested Anti-NRM Antibody Titration: 0.2-1 ug/ml; ELISA Titer: 1: 62500; Positive Control: Human Small Intestine