

## Product datasheet for **TA341886**

### SEC63 Rabbit Polyclonal Antibody

#### Product data:

Product Type:	Primary Antibodies
Applications:	WB
Recommended Dilution:	WB
Reactivity:	Human
Host:	Rabbit
Isotype:	IgG
Clonality:	Polyclonal
Immunogen:	The immunogen for anti-SEC63 antibody: synthetic peptide directed towards the C terminal of human SEC63. Synthetic peptide located within the following region: WWLYIADRKEQTLISMPYHVCTLKDTEEVELKFPAPGKPGNYQYTVFLRS
Formulation:	Liquid. Purified antibody supplied in 1x PBS buffer with 0.09% (w/v) sodium azide and 2% sucrose.
Concentration:	lot specific
Conjugation:	Unconjugated
Storage:	Store at -20°C as received.
Stability:	Stable for 12 months from date of receipt.
Predicted Protein Size:	88 kDa
Gene Name:	SEC63 homolog, protein translocation regulator
Database Link:	<a href="#">NP_009145</a> <a href="#">Entrez Gene 11231 Human</a> <a href="#">Q9UGP8</a>
Background:	The Sec61 complex isThe central component ofThe protein translocation apparatus ofThe endoplasmic reticulum (ER) membrane.The protein encoded byThis gene and SEC62 protein are found to be associated with ribosome-free SEC61 complex. It is speculated that Sec61-Sec62-Sec63 may perform post-translational protein translocation intoThe ER.The Sec61-Sec62-Sec63 complex might also performThe backward transport of ER proteins that are subject toThe ubiquitin-proteasome-dependent degradation pathway.The encoded protein is an integral membrane protein located inThe rough ER. [provided by RefSeq, Jul 2008]



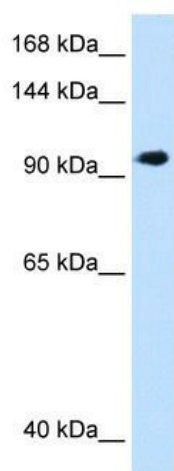
[View online »](#)

**Synonyms:** DNAJC23; ERdj2; PRO2507; SEC63L

**Note:** Immunogen Sequence Homology: Dog: 100%; Pig: 100%; Rat: 100%; Horse: 100%; Human: 100%; Mouse: 100%; Bovine: 100%; Rabbit: 100%; Guinea pig: 100%; Zebrafish: 85%

**Protein Families:** Transmembrane

**Product images:**



WB Suggested Anti-SEC63 Antibody Titration:  
1.25 ug/ml; Positive Control: HepG2 cell lysate