

## Product datasheet for **TA341885**

### **GALNT6 Rabbit Polyclonal Antibody**

#### **Product data:**

Product Type:	Primary Antibodies
Applications:	IHC, WB
Recommended Dilution:	WB, IHC
Reactivity:	Human
Host:	Rabbit
Isotype:	IgG
Clonality:	Polyclonal
Immunogen:	The immunogen for anti-GALNT6 antibody: synthetic peptide directed towards the N terminal of human GALNT6. Synthetic peptide located within the following region: MNNLRDSMPKLRAPAEAQQLFSINQSLPGFYTPAELKPFWERPPQDP
Formulation:	Liquid. Purified antibody supplied in 1x PBS buffer with 0.09% (w/v) sodium azide and 2% sucrose. <i>Note that this product is shipped as lyophilized powder to China customers.</i>
Concentration:	lot specific
Conjugation:	Unconjugated
Storage:	Store at -20°C as received.
Stability:	Stable for 12 months from date of receipt.
Predicted Protein Size:	71 kDa
Gene Name:	polypeptide N-acetylgalactosaminyltransferase 6
Database Link:	<a href="#">NP_009141</a> <a href="#">Entrez Gene 11226 Human</a> <a href="#">Q8NCL4</a>



[View online »](#)

**Background:**

This gene encodes a member of the UDP-N-acetyl-alpha-D-galactosamine:polypeptide N-acetylgalactosaminyltransferase (GalNAc-T) family of enzymes. GalNAc-Ts initiate mucin-type O-linked glycosylation in the Golgi apparatus by catalyzing the transfer of GalNAc to serine and threonine residues on target proteins. They are characterized by an N-terminal transmembrane domain, a stem region, a luminal catalytic domain containing a GT1 motif and Gal/GalNAc transferase motif, and a C-terminal ricin/lectin-like domain. GalNAc-Ts have different, but overlapping, substrate specificities and patterns of expression. The encoded protein is capable of glycosylating fibronectin peptide in vitro and is expressed in a fibroblast cell line, indicating that it may be involved in the synthesis of oncofetal fibronectin. [provided by RefSeq, Jul 2008]

**Synonyms:**

GALNAC-T6; GalNAcT6

**Note:**

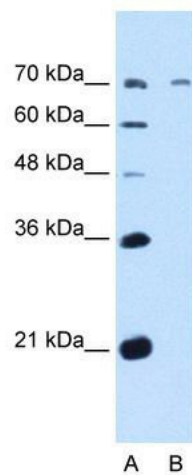
Immunogen Sequence Homology: Dog: 100%; Pig: 100%; Horse: 100%; Human: 100%; Mouse: 100%; Bovine: 100%; Rat: 93%; Rabbit: 86%; Zebrafish: 85%; Guinea pig: 85%

**Protein Families:**

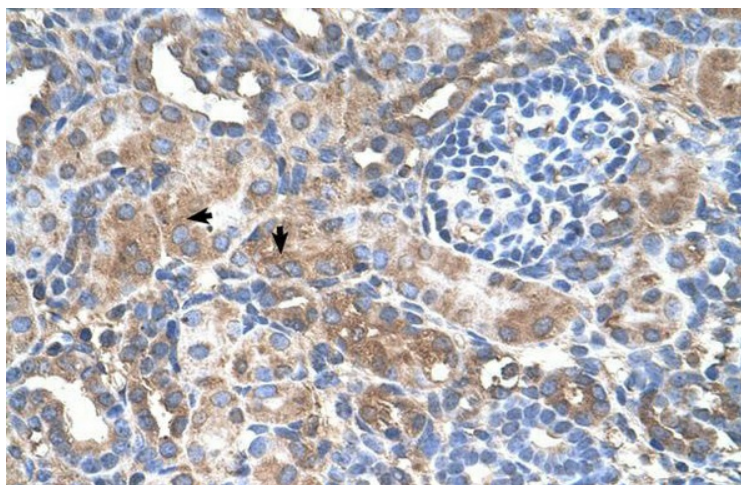
Transmembrane

**Protein Pathways:**

Metabolic pathways, O-Glycan biosynthesis

**Product images:**

WB Suggested Anti-GALNT6 Antibody Titration: 5.0 ug/ml; Positive Control: HepG2 cell lysate



Human kidney