

Product datasheet for **TA341882**

HYPE (FICD) Rabbit Polyclonal Antibody

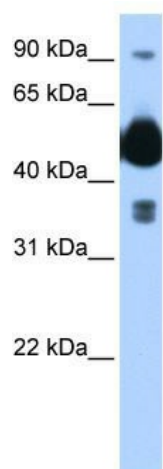
Product data:

Product Type:	Primary Antibodies
Applications:	IHC, WB
Recommended Dilution:	WB, IHC
Reactivity:	Human
Host:	Rabbit
Isotype:	IgG
Clonality:	Polyclonal
Immunogen:	The immunogen for anti-FICD antibody: synthetic peptide directed towards the C terminal of human FICD. Synthetic peptide located within the following region: GDVRRPFIRFIKCTETTLDTLLFATTEYSVALPEAQPNHSGFKETLPVKP
Formulation:	Liquid. Purified antibody supplied in 1x PBS buffer with 0.09% (w/v) sodium azide and 2% sucrose. <i>Note that this product is shipped as lyophilized powder to China customers.</i>
Concentration:	lot specific
Conjugation:	Unconjugated
Storage:	Store at -20°C as received.
Stability:	Stable for 12 months from date of receipt.
Predicted Protein Size:	52 kDa
Gene Name:	FIC domain containing
Database Link:	NP_009007 Entrez Gene 11153 Human Q9BVA6
Background:	The function remains known.
Synonyms:	HIP13; HYPE; UNQ3041
Note:	Immunogen Sequence Homology: Dog: 100%; Pig: 100%; Rat: 100%; Horse: 100%; Human: 100%; Mouse: 100%; Bovine: 100%; Guinea pig: 92%
Protein Families:	Transmembrane

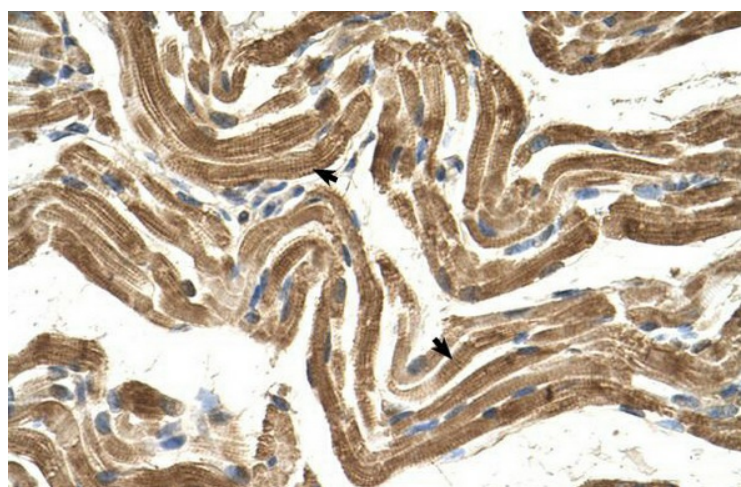


[View online »](#)

Product images:



WB Suggested Anti-FICD Antibody Titration: 0.2-1 ug/ml; Positive Control: Transfected 293T



Human Muscle