

Product datasheet for **TA341881**

HYPE (FICD) Rabbit Polyclonal Antibody

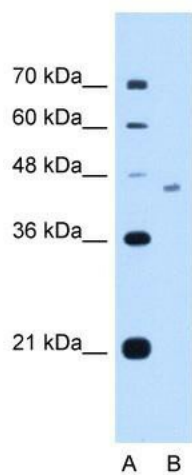
Product data:

Product Type:	Primary Antibodies
Applications:	WB
Recommended Dilution:	WB
Reactivity:	Human
Host:	Rabbit
Isotype:	IgG
Clonality:	Polyclonal
Immunogen:	The immunogen for anti-FICD antibody: synthetic peptide directed towards the C terminal of human FICD. Synthetic peptide located within the following region: FAALAHYKLVYIHPFIDGNGRTSRLLMNLILMQAGYPPITIRKEQRSDYY
Formulation:	Liquid. Purified antibody supplied in 1x PBS buffer with 0.09% (w/v) sodium azide and 2% sucrose. <i>Note that this product is shipped as lyophilized powder to China customers.</i>
Concentration:	lot specific
Conjugation:	Unconjugated
Storage:	Store at -20°C as received.
Stability:	Stable for 12 months from date of receipt.
Predicted Protein Size:	52 kDa
Gene Name:	FIC domain containing
Database Link:	NP_009007 Entrez Gene 11153 Human Q9BVA6
Background:	The function remains known.
Synonyms:	HIP13; HYPE; UNQ3041
Note:	Immunogen Sequence Homology: Dog: 100%; Pig: 100%; Rat: 100%; Horse: 100%; Human: 100%; Mouse: 100%; Bovine: 100%; Rabbit: 100%; Guinea pig: 100%; Sheep: 93%
Protein Families:	Transmembrane



[View online »](#)

Product images:



WB Suggested Anti-FICD Antibody Titration: 2.5 ug/ml; Positive Control: HepG2 cell lysate