

Product datasheet for **TA341880**

BVES Rabbit Polyclonal Antibody

Product data:

Product Type:	Primary Antibodies
Applications:	WB
Recommended Dilution:	WB
Reactivity:	Human
Host:	Rabbit
Isotype:	IgG
Clonality:	Polyclonal
Immunogen:	The immunogen for anti-BVES antibody: synthetic peptide directed towards the middle region of human BVES. Synthetic peptide located within the following region: YLIGKDITNKLYSLNDPTLNDKKAKKLEHQLSLCTQISMLEMRNSIASSS
Formulation:	Liquid. Purified antibody supplied in 1x PBS buffer with 0.09% (w/v) sodium azide and 2% sucrose. <i>Note that this product is shipped as lyophilized powder to China customers.</i>
Concentration:	lot specific
Conjugation:	Unconjugated
Storage:	Store at -20°C as received.
Stability:	Stable for 12 months from date of receipt.
Predicted Protein Size:	41 kDa
Gene Name:	blood vessel epicardial substance
Database Link:	NP_009004 Entrez Gene 11149 Human Q8NE79
Background:	This gene encodes a member of the POP family of proteins containing three putative transmembrane domains. This gene is expressed in cardiac and skeletal muscle and may play an important role in development of these tissues. The mouse ortholog may be involved in the regeneration of adult skeletal muscle and may act as a cell adhesion molecule in coronary vasculogenesis. Three transcript variants encoding the same protein have been found for this gene. [provided by RefSeq, Dec 2010]



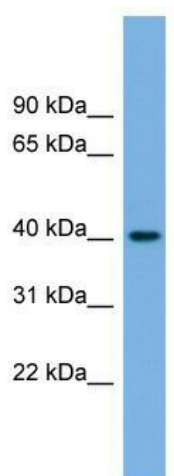
[View online »](#)

Synonyms: HBVES; LGMD2X; POP1; POPDC1

Note: Immunogen Sequence Homology: Dog: 100%; Pig: 100%; Rat: 100%; Horse: 100%; Human: 100%; Mouse: 100%; Bovine: 100%; Rabbit: 100%; Guinea pig: 100%; Zebrafish: 92%; Yeast: 82%

Protein Families: Transmembrane

Product images:



WB Suggested Anti-BVES Antibody Titration: 0.2-1 ug/ml; Positive Control: Human Stomach