

Product datasheet for **TA341878**

BTN2A1 Rabbit Polyclonal Antibody

Product data:

Product Type:	Primary Antibodies
Applications:	WB
Recommended Dilution:	WB
Reactivity:	Human
Host:	Rabbit
Isotype:	IgG
Clonality:	Polyclonal
Immunogen:	The immunogen for anti-BTN2A1 antibody: synthetic peptide directed towards the N terminal of human BTN2A1. Synthetic peptide located within the following region: SVALVIHNITAQENGTYRCYFQEGRSYDEAILHLVAVGLGSKPLISMRGH
Formulation:	Liquid. Purified antibody supplied in 1x PBS buffer with 0.09% (w/v) sodium azide and 2% sucrose. <i>Note that this product is shipped as lyophilized powder to China customers.</i>
Concentration:	lot specific
Conjugation:	Unconjugated
Storage:	Store at -20°C as received.
Stability:	Stable for 12 months from date of receipt.
Predicted Protein Size:	57 kDa
Gene Name:	butyrophilin subfamily 2 member A1
Database Link:	NP_008980 Entrez Gene 11120 Human Q7KYR7



[View online »](#)

Background:

This gene encodes a member of the immunoglobulin superfamily. The gene is located in a cluster of butyrophilin-like genes in the juxta-telomeric region of the major histocompatibility complex on chromosome 6. A pseudogene of this gene has been identified in this cluster. The encoded protein is an integral plasma membrane protein involved in lipid, fatty-acid, and sterol metabolism. Alterations in this gene may be associated with several disease states including metabolic syndrome. Multiple alternatively spliced transcript variants encoding different isoforms have been found for this gene. [provided by RefSeq, Jul 2013]

Synonyms:

BK14H9.1; BT2.1; BTF1; BTN2.1; DJ3E1.1

Note:

Immunogen Sequence Homology: Pig: 100%; Human: 100%; Rabbit: 100%; Bovine: 93%; Rat: 91%; Mouse: 91%; Dog: 86%; Guinea pig: 86%; Horse: 82%

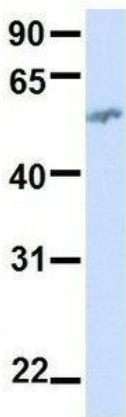
Protein Families:

Druggable Genome, Transmembrane

Product images:


WB Suggested Anti-BTN2A1 Antibody Titration:
0.2-1 ug/ml; ELISA Titer: 1: 62500; Positive
Control: Human Thymus

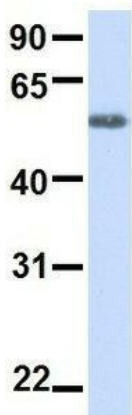
BTN2A1



Rabbit Anti-BTN2A1
Sample Type: Human Adult
Placenta
Antibody Concentration: 1ug/mL

Host: Rabbit; Target Name: BTN2A1; Sample
Tissue: Human Adult Placenta; Antibody Dilution:
1.0 ug/ml

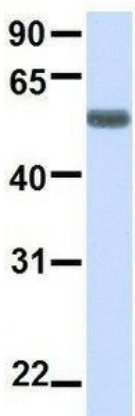
BTN2A1



Rabbit Anti-BTN2A1
Sample Type: Human Fetal Heart
Antibody Concentration: 1ug/mL

Host: Rabbit; Target Name: BTN2A1; Sample Tissue: Human Fetal Heart; Antibody Dilution: 1.0 ug/ml

BTN2A1



Rabbit Anti-BTN2A1
Sample Type: Human Fetal Lung
Antibody Concentration: 1ug/mL

Host: Rabbit; Target Name: BTN2A1; Sample Tissue: Human Fetal Lung; Antibody Dilution: 1.0 ug/ml