

## Product datasheet for **TA341877**

### RER1 Rabbit Polyclonal Antibody

#### Product data:

Product Type:	Primary Antibodies
Applications:	IHC, WB
Recommended Dilution:	WB
Reactivity:	Human
Host:	Rabbit
Isotype:	IgG
Clonality:	Polyclonal
Immunogen:	The immunogen for anti-RER1 antibody: synthetic peptide directed towards the middle region of human RER1. Synthetic peptide located within the following region: GIYHLNLFIAFLSPKVDPSLMEDSDDGPSLPTKQNEEFRPFIRRLPEFKF
Formulation:	Liquid. Purified antibody supplied in 1x PBS buffer with 0.09% (w/v) sodium azide and 2% sucrose. <i>Note that this product is shipped as lyophilized powder to China customers.</i>
Concentration:	lot specific
Conjugation:	Unconjugated
Storage:	Store at -20°C as received.
Stability:	Stable for 12 months from date of receipt.
Predicted Protein Size:	23 kDa
Gene Name:	retention in endoplasmic reticulum sorting receptor 1
Database Link:	<a href="#">NP_008964</a> <a href="#">Entrez Gene 11079 Human</a> <a href="#">O15258</a>
Background:	The protein encoded byThis gene is a multi-pass membrane protein that is localized toThe golgi apparatus. It is involved inThe retention of endoplasmic reticulum (ER) membrane proteins inThe ER and retrieval of ER membrane proteins fromThe early Golgi compartment to facilitate gamma-secretase complex assembly. [provided by RefSeq, Oct 2009]
Synonyms:	RP4-740C4.2



[View online »](#)

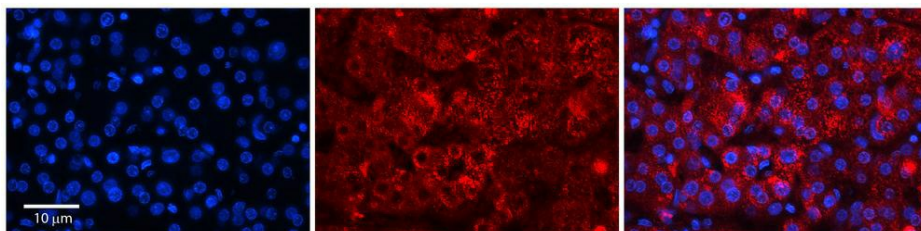
**Note:** Immunogen Sequence Homology: Dog: 100%; Pig: 100%; Rat: 100%; Horse: 100%; Human: 100%; Mouse: 100%; Bovine: 100%; Rabbit: 100%; Guinea pig: 100%; Zebrafish: 79%

**Protein Families:** Transmembrane

### Product images:



WB Suggested Anti-RER1 Antibody Titration: 0.2-1 ug/ml; ELISA Titer: 1: 62500; Positive Control: 293T cell lysate



Rabbit Anti-RER1 Antibody; Formalin Fixed Paraffin Embedded Tissue: Human Adult Liver; Observed Staining: Cytoplasm in hepatocytes, strong signal, very wide tissue distribution; Primary Antibody Concentration: 1: 100; Secondary Antibody: Donkey anti-Rabbi