

## Product datasheet for **TA341876**

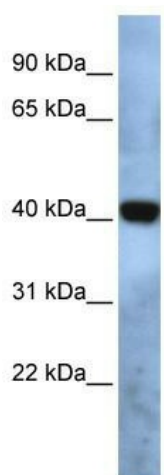
### PL6 (TMEM115) Rabbit Polyclonal Antibody

#### Product data:

Product Type:	Primary Antibodies
Applications:	WB
Recommended Dilution:	WB
Reactivity:	Human
Host:	Rabbit
Isotype:	IgG
Clonality:	Polyclonal
Immunogen:	The immunogen for anti-TMEM115 antibody: synthetic peptide directed towards the N terminal of human TMEM115. Synthetic peptide located within the following region: LLSFAVDTGCLAVTPGYLFPPNFWIWLATHGLMEQHWWDVAISLTTVVV
Formulation:	Liquid. Purified antibody supplied in 1x PBS buffer with 0.09% (w/v) sodium azide and 2% sucrose.
Concentration:	lot specific
Conjugation:	Unconjugated
Storage:	Store at -20°C as received.
Stability:	Stable for 12 months from date of receipt.
Predicted Protein Size:	38 kDa
Gene Name:	transmembrane protein 115
Database Link:	<a href="#">NP_008955</a> <a href="#">Entrez Gene 11070 Human</a> <a href="#">Q12893</a>
Background:	The specific function of TMEM115 is not yet known.
Synonyms:	PL6
Note:	Immunogen Sequence Homology: Dog: 100%; Pig: 100%; Rat: 100%; Human: 100%; Mouse: 100%; Bovine: 100%; Rabbit: 100%; Guinea pig: 100%; Zebrafish: 85%
Protein Families:	Transmembrane


[View online »](#)

## Product images:



WB Suggested Anti-TMEM115 Antibody Titration:  
0.2-1 ug/ml; ELISA Titer: 1: 1562500; Positive  
Control: Human brain