

Product datasheet for **TA341874**

Nogo A (RTN4) Rabbit Polyclonal Antibody

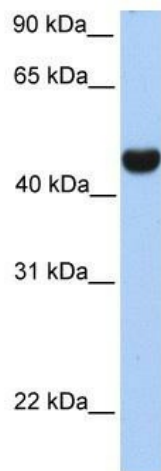
Product data:

Product Type:	Primary Antibodies
Applications:	WB
Recommended Dilution:	WB
Reactivity:	Human
Host:	Rabbit
Isotype:	IgG
Clonality:	Polyclonal
Immunogen:	The immunogen for anti-RTN4 antibody: synthetic peptide directed towards the middle region of human RTN4. Synthetic peptide located within the following region: FRIYKGVIAIQKSDEGHPFRAYLESEVAISEELVQKYSNSALGHVNCTI
Formulation:	Liquid. Purified antibody supplied in 1x PBS buffer with 0.09% (w/v) sodium azide and 2% sucrose. <i>Note that this product is shipped as lyophilized powder to China customers.</i>
Concentration:	lot specific
Conjugation:	Unconjugated
Storage:	Store at -20°C as received.
Stability:	Stable for 12 months from date of receipt.
Predicted Protein Size:	42 kDa
Gene Name:	reticulon 4
Database Link:	NP_997403 Entrez Gene 57142 Human Q9NQ3



[View online »](#)

Background:	This gene belongs toThe family of reticulon encoding genes. Reticulons are associated withThe endoplasmic reticulum, and are involved in neuroendocrine secretion or in membrane trafficking in neuroendocrine cells.The product ofThis gene is a potent neurite outgrowth inhibitor which may also help blockThe regeneration ofThe central nervous system in higher vertebrates. Alternatively spliced transcript variants derived both from differential splicing and differential promoter usage and encoding different isoforms have been identified. [provided by RefSeq, Jul 2008]
Synonyms:	250; ASY; Nbla00271; Nbla10545; NI220; NOGO; NOGO-A; Nogo-B; Nogo-C; NOGOC; NSP; NSP-CL; RTN-X; RTN4-A
Note:	Immunogen Sequence Homology: Dog: 100%; Pig: 100%; Rat: 100%; Horse: 100%; Human: 100%; Mouse: 100%; Sheep: 100%; Bovine: 100%; Rabbit: 100%; Guinea pig: 93%; Zebrafish: 79%
Protein Families:	Transmembrane

Product images:

WB Suggested Anti-RTN4 Antibody Titration: 0.2-1 ug/ml; Positive Control: Human brain