

Product datasheet for **TA341871**

Melanoma gp100 (PMEL) Rabbit Polyclonal Antibody

Product data:

Product Type:	Primary Antibodies
Applications:	IHC, WB
Recommended Dilution:	WB, IHC
Reactivity:	Human
Host:	Rabbit
Isotype:	IgG
Clonality:	Polyclonal
Immunogen:	The immunogen for anti-SILV antibody: synthetic peptide directed towards the N terminal of human SILV. Synthetic peptide located within the following region: HFLRNQPLTFALQLHDPSGYLAEADLSYTWDFGDSSGTLISRALVWHTY
Formulation:	Liquid. Purified antibody supplied in 1x PBS buffer with 0.09% (w/v) sodium azide and 2% sucrose. <i>Note that this product is shipped as lyophilized powder to China customers.</i>
Concentration:	lot specific
Conjugation:	Unconjugated
Storage:	Store at -20°C as received.
Stability:	Stable for 12 months from date of receipt.
Predicted Protein Size:	70 kDa
Gene Name:	premelanosome protein
Database Link:	NP_008859 Entrez Gene 6490 Human P40967



[View online »](#)

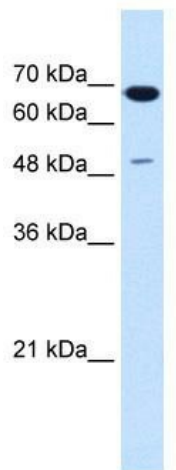
Background: This gene encodes a melanocyte-specific type I transmembrane glycoprotein. The encoded protein is enriched in melanosomes, which are the melanin-producing organelles in melanocytes, and plays an essential role in the structural organization of premelanosomes. This protein is involved in generating internal matrix fibers that define the transition from Stage I to Stage II melanosomes. This protein undergoes a complex pattern of posttranslational processing and modification that is essential to the proper functioning of the protein. A secreted form of this protein that is released by proteolytic ectodomain shedding may be used as a melanoma-specific serum marker. Alternate splicing results in multiple transcript variants. [provided by RefSeq, Jan 2011]

Synonyms: D12S53E; gp100; ME20; ME20-M; ME20M; P1; P100; PMEL17; SI; SIL; SILV

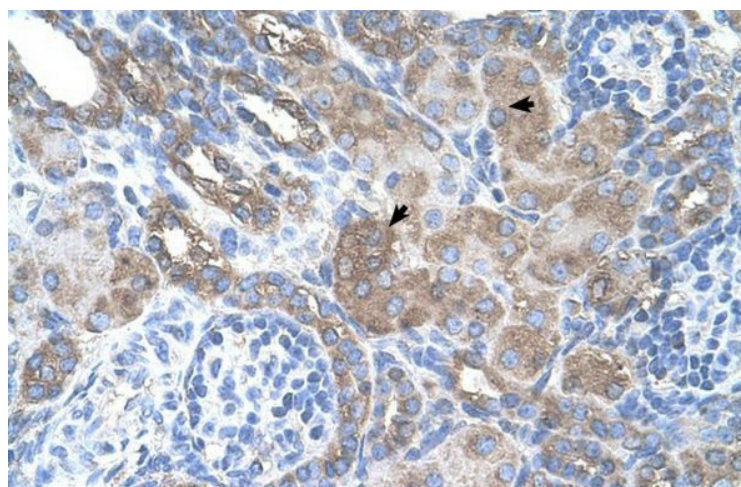
Note: Immunogen Sequence Homology: Human: 100%; Mouse: 100%; Pig: 93%; Rat: 93%; Goat: 93%; Horse: 93%; Bovine: 93%; Guinea pig: 93%; Dog: 86%; Rabbit: 86%

Protein Families: Secreted Protein, Transmembrane

Product images:



WB Suggested Anti-SILV Antibody Titration: 1.25 ug/ml; Positive Control: HepG2 cell lysate



Human kidney