

Product datasheet for **TA341866**

KDEL3 Rabbit Polyclonal Antibody

Product data:

Product Type:	Primary Antibodies
Applications:	WB
Recommended Dilution:	WB
Reactivity:	Human
Host:	Rabbit
Isotype:	IgG
Clonality:	Polyclonal
Immunogen:	The immunogen for anti-KDEL3 antibody: synthetic peptide directed towards the middle region of human KDEL3. Synthetic peptide located within the following region: AYVTYMIYGKFRKTFDSENDTFRLEFLLVPVIGLSFLENYSFTLLEILW
Formulation:	Liquid. Purified antibody supplied in 1x PBS buffer with 0.09% (w/v) sodium azide and 2% sucrose. <i>Note that this product is shipped as lyophilized powder to China customers.</i>
Concentration:	lot specific
Conjugation:	Unconjugated
Storage:	Store at -20°C as received.
Stability:	Stable for 12 months from date of receipt.
Predicted Protein Size:	25 kDa
Gene Name:	KDEL endoplasmic reticulum protein retention receptor 3
Database Link:	NP_006846 Entrez Gene 11015 Human O43731



[View online »](#)

Background:

This gene encodes a member of the KDEL endoplasmic reticulum protein retention receptor family. Retention of resident soluble proteins in the lumen of the endoplasmic reticulum (ER) is achieved in both yeast and animal cells by their continual retrieval from the cis-Golgi, or a pre-Golgi compartment. Sorting of these proteins is dependent on a C-terminal tetrapeptide signal, usually lys-aspartic acid-glutamic acid-leucine (KDEL) in animal cells, and histidine-aspartic acid-glutamic acid-leucine (HDEL) in *S. cerevisiae*. This process is mediated by a receptor that recognizes, and binds the tetrapeptide-containing protein, and returns it to the ER. In yeast, the sorting receptor encoded by a single gene, ERD2, is a seven-transmembrane protein. Unlike yeast, several human homologs of the ERD2 gene, constituting the KDEL receptor gene family, have been described. KDEL3 was the third member of the family to be identified. Alternate splicing results in multiple transcript variants. [provided by RefSeq, Jul 2013]

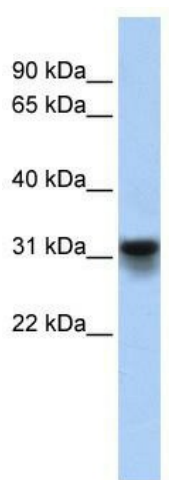
Synonyms:

ERD2L3

Note: Immunogen Sequence Homology: Dog: 100%; Pig: 100%; Horse: 100%; Human: 100%; Bovine: 100%; Rabbit: 100%; Rat: 93%; Guinea pig: 93%; Mouse: 92%

Protein Families: Druggable Genome, Transmembrane

Protein Pathways: *Vibrio cholerae* infection

Product images:


WB Suggested Anti-KDEL3 Antibody Titration:
0.2-1 µg/ml; ELISA Titer: 1: 312500; Positive
Control: Human heart