

Product datasheet for **TA341864**

CKAP4 Rabbit Polyclonal Antibody

Product data:

Product Type:	Primary Antibodies
Applications:	IHC, WB
Recommended Dilution:	WB, IHC
Reactivity:	Human
Host:	Rabbit
Isotype:	IgG
Clonality:	Polyclonal
Immunogen:	The immunogen for anti-CKAP4 antibody: synthetic peptide directed towards the middle region of human CKAP4. Synthetic peptide located within the following region: SDGIHVVKDARERDFTSLENTVEERLTELTKSINDNIAIFTEVQKRSQKE
Formulation:	Liquid. Purified antibody supplied in 1x PBS buffer with 0.09% (w/v) sodium azide and 2% sucrose. <i>Note that this product is shipped as lyophilized powder to China customers.</i>
Concentration:	lot specific
Conjugation:	Unconjugated
Storage:	Store at -20°C as received.
Stability:	Stable for 12 months from date of receipt.
Predicted Protein Size:	66 kDa
Gene Name:	cytoskeleton-associated protein 4
Database Link:	NP_006816 Entrez Gene 10970 Human Q07065
Background:	CKAP4/p63 is a substrate of DHHC2, a putative tumor suppressor. CK MNF116 and p63 were useful in identifying squamous cell carcinomas with single cell infiltration. Those results suggested a role of CKAP4/p63 in tumor.
Synonyms:	CLIMP-63; ERGIC-63; p63
Note:	Immunogen Sequence Homology: Dog: 100%; Rat: 100%; Horse: 100%; Human: 100%; Mouse: 100%; Bovine: 100%; Pig: 92%; Rabbit: 92%; Guinea pig: 92%



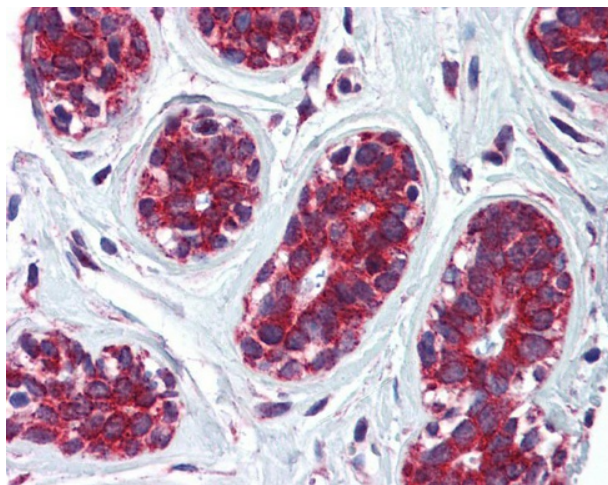
[View online »](#)

Protein Families: Druggable Genome, Transmembrane

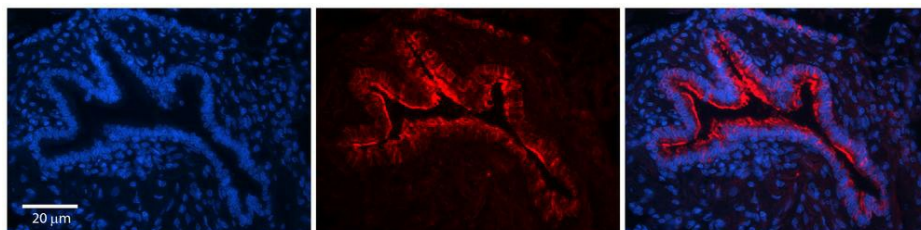
Product images:



WB Suggested Anti-CKAP4 Antibody Titration: 0.2-1 ug/ml; ELISA Titer: 1: 312500; Positive Control: Hela cell lysate. CKAP4 is supported by BioGPS gene expression data to be expressed in HeLa



Breast



Rabbit Anti-CKAP4 Antibody; Formalin Fixed Paraffin Embedded Tissue: Human Bronchial Epithelial Tissue; Observed Staining: Membrane and cytoplasmic in excellent staining !; Primary Antibody Concentration: 1: 100; Other Working Concentrations: 1/600; Secon