

## Product datasheet for **TA341862**

### LMAN2 Rabbit Polyclonal Antibody

#### Product data:

Product Type:	Primary Antibodies
Applications:	IHC, WB
Recommended Dilution:	WB, IHC
Reactivity:	Human
Host:	Rabbit
Isotype:	IgG
Clonality:	Polyclonal
Immunogen:	The immunogen for anti-LMAN2 antibody: synthetic peptide directed towards the N terminal of human LMAN2. Synthetic peptide located within the following region: SLIKPYQGVGSSSMPLWDFQGSTMLOTSQYVRLTPDERSKEGSIWNHQPCF
Formulation:	Liquid. Purified antibody supplied in 1x PBS buffer with 0.09% (w/v) sodium azide and 2% sucrose. <i>Note that this product is shipped as lyophilized powder to China customers.</i>
Concentration:	lot specific
Conjugation:	Unconjugated
Storage:	Store at -20°C as received.
Stability:	Stable for 12 months from date of receipt.
Predicted Protein Size:	36 kDa
Gene Name:	lectin, mannose binding 2
Database Link:	<a href="#">NP_006807</a> <a href="#">Entrez Gene 10960 Human Q12907</a>
Background:	This gene encodes a type I transmembrane lectin that shuttles betweenThe endoplasmic reticulum,The Golgi apparatus andThe plasma membrane.The encoded protein binds high mannose type glycoproteins and may facilitateTheir sorting, trafficking and quality control. [provided by RefSeq, Oct 2008]
Synonyms:	C5orf8; GP36B; VIP36

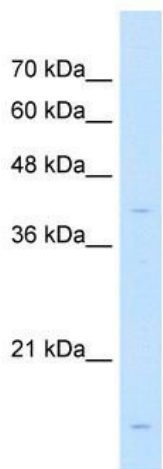


[View online »](#)

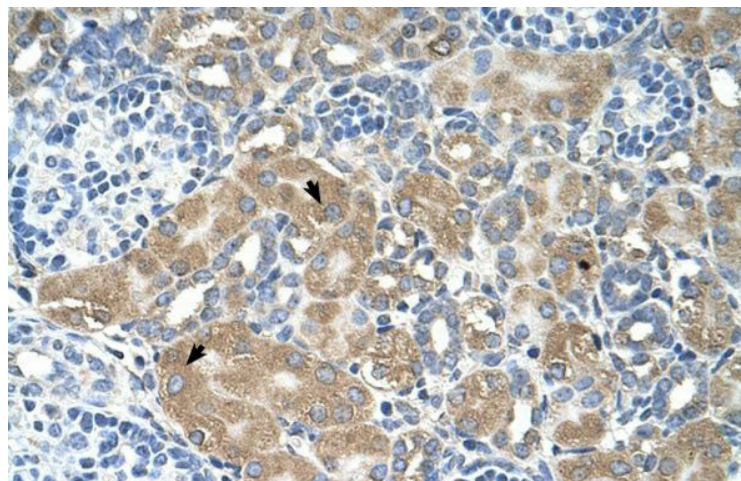
**Note:** Immunogen Sequence Homology: Dog: 100%; Pig: 100%; Rat: 100%; Horse: 100%; Human: 100%; Mouse: 100%; Bovine: 100%; Rabbit: 100%; Guinea pig: 100%; Zebrafish: 93%

**Protein Families:** Transmembrane

**Product images:**



WB Suggested Anti-LMAN2 Antibody Titration: 1 ug/ml; Positive Control: Jurkat cell lysate



Human kidney