

Product datasheet for **TA341861**

AFG3L2 Rabbit Polyclonal Antibody

Product data:

Product Type:	Primary Antibodies
Applications:	WB
Recommended Dilution:	WB
Reactivity:	Human
Host:	Rabbit
Isotype:	IgG
Clonality:	Polyclonal
Immunogen:	The immunogen for anti-AFG3L2 antibody: synthetic peptide directed towards the middle region of human AFG3L2. Synthetic peptide located within the following region: VNFLKNPKQYQDLGAKIPKGAILTGPPGTGKTLAKATAGEANVPFITVS
Formulation:	Liquid. Purified antibody supplied in 1x PBS buffer with 0.09% (w/v) sodium azide and 2% sucrose. <i>Note that this product is shipped as lyophilized powder to China customers.</i>
Concentration:	lot specific
Conjugation:	Unconjugated
Storage:	Store at -20°C as received.
Stability:	Stable for 12 months from date of receipt.
Predicted Protein Size:	88 kDa
Gene Name:	AFG3 like matrix AAA peptidase subunit 2
Database Link:	NP_006787 Entrez Gene 10939 Human Q9Y4W6
Background:	This gene encodes a protein localized in mitochondria and closely related to paraplegin. The paraplegin gene is responsible for an autosomal recessive form of hereditary spastic paraplegia. This gene is a candidate gene for other hereditary spastic paraplegias or neurodegenerative disorders. [provided by RefSeq, Jul 2008]
Synonyms:	SCA28; SPAX5

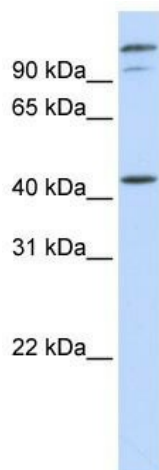


[View online »](#)

Note: Immunogen Sequence Homology: Dog: 100%; Pig: 100%; Rat: 100%; Horse: 100%; Human: 100%; Mouse: 100%; Bovine: 100%; Rabbit: 100%; Zebrafish: 100%; Guinea pig: 100%; Yeast: 85%; Goat: 79%

Protein Families: Druggable Genome, Protease, Transmembrane

Product images:



WB Suggested Anti-AFG3L2 Antibody Titration: 0.2-1 ug/ml; ELISA Titer: 1: 312500; Positive Control: HeLa cell lysate. AFG3L2 is supported by BioGPS gene expression data to be expressed in HeLa