

Product datasheet for **TA341860**

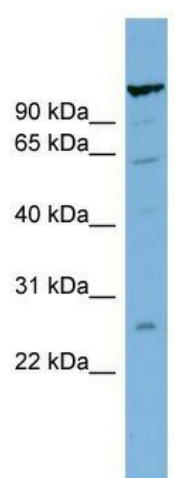
TSBP1 Rabbit Polyclonal Antibody

Product data:

Product Type:	Primary Antibodies
Applications:	WB
Recommended Dilution:	WB
Reactivity:	Human
Host:	Rabbit
Isotype:	IgG
Clonality:	Polyclonal
Immunogen:	The immunogen for anti-C6orf10 antibody: synthetic peptide directed towards the middle region of human C6orf10. Synthetic peptide located within the following region: KKEKGDKNTKGDKGDKVKGKRESEINGEKS KGS KRAKANTGRKYNKKVE
Formulation:	Liquid. Purified antibody supplied in 1x PBS buffer with 0.09% (w/v) sodium azide and 2% sucrose.
Concentration:	lot specific
Conjugation:	Unconjugated
Storage:	Store at -20°C as received.
Stability:	Stable for 12 months from date of receipt.
Predicted Protein Size:	61 kDa
Gene Name:	chromosome 6 open reading frame 10
Database Link:	NP_006772 Entrez Gene 10665 Human Q5SRN2
Background:	The function of This protein remains unknown.
Synonyms:	TSBP
Note:	Immunogen Sequence Homology: Human: 100%
Protein Families:	Transmembrane


[View online »](#)

Product images:



WB Suggested Anti-C6orf10 Antibody Titration:
0.2-1 ug/ml; Positive Control: ACHN cell lysate