

Product datasheet for **TA341858**

BTNL3 Rabbit Polyclonal Antibody

Product data:

Product Type:	Primary Antibodies
Applications:	WB
Recommended Dilution:	WB
Reactivity:	Human
Host:	Rabbit
Isotype:	IgG
Clonality:	Polyclonal
Immunogen:	The immunogen for anti-BTNL3 antibody: synthetic peptide directed towards the N terminal of human BTNL3. Synthetic peptide located within the following region: EDWESKQMPQYRGRTEFVKDSIAGGRVSLRLKNITPSDIGLYGCWFSSQI
Formulation:	Liquid. Purified antibody supplied in 1x PBS buffer with 0.09% (w/v) sodium azide and 2% sucrose. <i>Note that this product is shipped as lyophilized powder to China customers.</i>
Concentration:	lot specific
Conjugation:	Unconjugated
Storage:	Store at -20°C as received.
Stability:	Stable for 12 months from date of receipt.
Predicted Protein Size:	52 kDa
Gene Name:	butyrophilin like 3
Database Link:	NP_932079 Entrez Gene 10917 Human Q6UXE8
Background:	The specific function of BTNL3 is not yet known.
Synonyms:	BTN9.1; BTNLR
Note:	Immunogen Sequence Homology: Human: 100%; Pig: 77%; Horse: 77%; Bovine: 77%
Protein Families:	Druggable Genome, Transmembrane



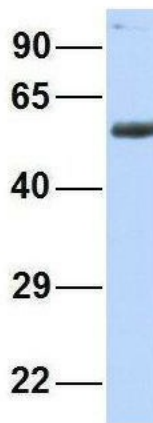
[View online »](#)

Product images:



WB Suggested Anti-BTNL3 Antibody Titration: 0.2-1 ug/ml; ELISA Titer: 1: 312500; Positive Control: Human Lung

BTNL3



Rabbit Anti-BTNL3
Sample Type: Human Fetal Heart
Antibody Concentration: 1ug/mL

2Hum. Fetal Heart; Host: Rabbit; Target Name: GNAS; Sample Tissue: Human Fetal Heart; Antibody Dilution: 1.0 ug/ml

BTNL3



Rabbit Anti-BTNL3
Sample Type: Human Fetal Muscle
Antibody Concentration: 1ug/mL

3Hum. Fetal Muscle; Host: Rabbit; Target Name: NOP56; Sample Tissue: Human Fetal Muscle; Antibody Dilution: 1.0 ug/ml

