

Product datasheet for **TA341857**

Pnpla6 Rabbit Polyclonal Antibody

Product data:

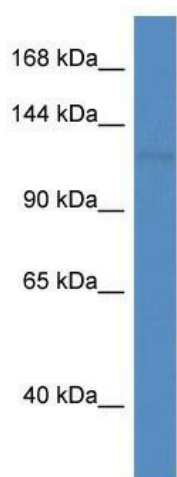
Product Type:	Primary Antibodies
Applications:	WB
Recommended Dilution:	WB
Reactivity:	Mouse
Host:	Rabbit
Isotype:	IgG
Clonality:	Polyclonal
Immunogen:	The immunogen for anti-Pnpla6 antibody: synthetic peptide corresponding to a region of Mouse. Synthetic peptide located within the following region: DGCADGEEEDCLTEYEEDAGPDCSRDEGGSPGASPSTASEVEEEKSTLR
Formulation:	Liquid. Purified antibody supplied in 1x PBS buffer with 0.09% (w/v) sodium azide and 2% sucrose. <i>Note that this product is shipped as lyophilized powder to China customers.</i>
Concentration:	lot specific
Conjugation:	Unconjugated
Storage:	Store at -20°C as received.
Stability:	Stable for 12 months from date of receipt.
Predicted Protein Size:	146 kDa
Gene Name:	patatin-like phospholipase domain containing 6
Database Link:	NP_056616 Entrez Gene 50767 Mouse Q3TRM4
Background:	Phospholipase B deacylates intracellular phosphatidylcholine (PtdCho), generating glycerophosphocholine (GroPtdCho). This deacylation occurs at both sn-2 and sn-1 positions of PtdCho. Its specific chemical modification by certain organophosphorus (OP) compounds leads to distal axonopathy.
Synonyms:	NTE; NTEMND; SPG39; sws



[View online »](#)

Note: Immunogen Sequence Homology: Dog: 100%; Pig: 100%; Rat: 100%; Horse: 100%; Human: 100%; Mouse: 100%; Bovine: 100%; Rabbit: 100%; Guinea pig: 100%

Product images:



WB Suggested Anti-Pnpla6 Antibody; Titration: 1.0 ug/ml; Positive Control: Mouse Heart