

Product datasheet for **TA341856**

MAN1A2 Rabbit Polyclonal Antibody

Product data:

Product Type:	Primary Antibodies
Applications:	WB
Recommended Dilution:	WB
Reactivity:	Human
Host:	Rabbit
Isotype:	IgG
Clonality:	Polyclonal
Immunogen:	The immunogen for anti-MAN1A2 antibody: synthetic peptide directed towards the middle region of human MAN1A2. Synthetic peptide located within the following region: FALGADGSRADKAGHYLELGAEIARTCHESYDRTALKLGPESFKFDGAVE
Formulation:	Liquid. Purified antibody supplied in 1x PBS buffer with 0.09% (w/v) sodium azide and 2% sucrose. <i>Note that this product is shipped as lyophilized powder to China customers.</i>
Concentration:	lot specific
Conjugation:	Unconjugated
Storage:	Store at -20°C as received.
Stability:	Stable for 12 months from date of receipt.
Predicted Protein Size:	73 kDa
Gene Name:	mannosidase alpha class 1A member 2
Database Link:	NP_006690 Entrez Gene 10905 Human O60476
Background:	Alpha-mannosidases function at different stages of N-glycan maturation in mammalian cells. See MAN2A1 (MIM 154582) for general information. [supplied by OMIM, Mar 2008]. ##Evidence-Data-START## Transcript exon combination :: BC052954.1, AF027156.1 [ECO:0000332] RNAseq introns :: single sample supports all introns ERS025081, ERS025082 [ECO:0000348] ##Evidence-Data-END##
Synonyms:	MAN1B



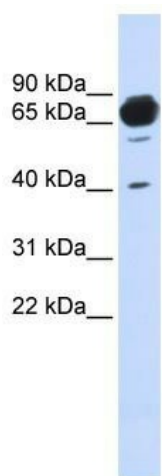
[View online »](#)

Note: Immunogen Sequence Homology: Dog: 100%; Pig: 100%; Rat: 100%; Horse: 100%; Human: 100%; Mouse: 100%; Bovine: 100%; Rabbit: 100%; Guinea pig: 100%; Zebrafish: 92%

Protein Families: Transmembrane

Protein Pathways: Metabolic pathways, N-Glycan biosynthesis

Product images:



WB Suggested Anti-MAN1A2 Antibody Titration:
0.2-1 ug/ml; ELISA Titer: 1: 62500; Positive
Control: Human brain