

Product datasheet for **TA341855**

LYVE1 Rabbit Polyclonal Antibody

Product data:

Product Type:	Primary Antibodies
Applications:	WB
Recommended Dilution:	WB
Reactivity:	Human
Host:	Rabbit
Isotype:	IgG
Clonality:	Polyclonal
Immunogen:	The immunogen for anti-LYVE1 antibody: synthetic peptide directed towards the N terminal of human LYVE1. Synthetic peptide located within the following region: ARCFSLVLLLSIWTRLLVQGSLRAEELSIQVSCRIMGITLVSKKANQQ
Formulation:	Liquid. Purified antibody supplied in 1x PBS buffer with 0.09% (w/v) sodium azide and 2% sucrose. <i>Note that this product is shipped as lyophilized powder to China customers.</i>
Concentration:	lot specific
Conjugation:	Unconjugated
Storage:	Store at -20°C as received.
Stability:	Stable for 12 months from date of receipt.
Predicted Protein Size:	35 kDa
Gene Name:	lymphatic vessel endothelial hyaluronan receptor 1
Database Link:	NP_006682 Entrez Gene 10894 Human Q9Y5Y7
Background:	This gene encodes a type I integral membrane glycoprotein. The encoded protein acts as a receptor and binds to both soluble and immobilized hyaluronan. This protein may function in lymphatic hyaluronan transport and have a role in tumor metastasis. [provided by RefSeq, Jul 2008]
Synonyms:	CRSBP-1; HAR; LYVE-1; XLKD1

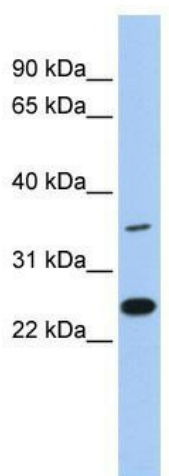


[View online »](#)

Note: Immunogen Sequence Homology: Human: 100%; Bovine: 93%; Pig: 86%; Horse: 86%; Dog: 79%; Guinea pig: 79%; Rabbit: 77%

Protein Families: Druggable Genome, Transmembrane

Product images:



WB Suggested Anti-LYVE1 Antibody Titration: 0.2-1 ug/ml; ELISA Titer: 1: 312500; Positive Control: MCF7 cell lysate