

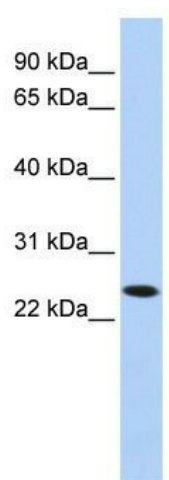
## Product datasheet for **TA341850**

### KLRA1 (KLRA1P) Rabbit Polyclonal Antibody

#### Product data:

Product Type:	Primary Antibodies
Applications:	WB
Recommended Dilution:	WB
Reactivity:	Human
Host:	Rabbit
Isotype:	IgG
Clonality:	Polyclonal
Immunogen:	The immunogen for anti-KLRA1 antibody: synthetic peptide directed towards the N terminal of human KLRA1. Synthetic peptide located within the following region: NDQGEIYSTLRFLQSPSESQNLRPDDTQRPCKTDDKEFSVPWHIAVTL
Formulation:	Liquid. Purified antibody supplied in 1x PBS buffer with 0.09% (w/v) sodium azide and 2% sucrose.
Concentration:	lot specific
Conjugation:	Unconjugated
Storage:	Store at -20°C as received.
Stability:	Stable for 12 months from date of receipt.
Predicted Protein Size:	25 kDa
Gene Name:	killer cell lectin like receptor A1, pseudogene
Database Link:	<a href="#">NP_006602</a> <a href="#">Entrez Gene 10748 Human</a>
Background:	The function of The KLRA1 protein remains unknown.
Synonyms:	A1; class I MHC receptor KLRA22; killer cell lectin-like receptor; KLRA#; Klra22; Ly-49L; Ly49; Ly49a; LY49L; Ly49o; Ly49v; member 1; MGC126520; MGC126522; natural killer cell receptor Ly49A; OTTMUSP00000026268; subfamily A
Note:	Immunogen Sequence Homology: Human: 100%; Bovine: 100%; Pig: 93%; Guinea pig: 93%; Dog: 92%; Rat: 92%; Horse: 92%; Rabbit: 86%
Protein Families:	Transmembrane


[View online »](#)

**Product images:**


WB Suggested Anti-KLRA1 Antibody Titration: 0.2-1 ug/ml; ELISA Titer: 1: 1562500; Positive Control: Human Liver