

Product datasheet for **TA341849**

Corin Rabbit Polyclonal Antibody

Product data:

Product Type:	Primary Antibodies
Applications:	WB
Recommended Dilution:	WB
Reactivity:	Mouse
Host:	Rabbit
Isotype:	IgG
Clonality:	Polyclonal
Immunogen:	The immunogen for Anti-Corin antibody is: synthetic peptide directed towards the C-terminal region of Mouse Corin. Synthetic peptide located within the following region: MGNKMPFKLQEGEVRIIPLEQCQSYFDMKTITNRMICAGYESGTVDSMG
Formulation:	Liquid. Purified antibody supplied in 1x PBS buffer with 0.09% (w/v) sodium azide and 2% sucrose. <i>Note that this product is shipped as lyophilized powder to China customers.</i>
Concentration:	lot specific
Conjugation:	Unconjugated
Storage:	Store at -20°C as received.
Stability:	Stable for 12 months from date of receipt.
Predicted Protein Size:	123 kDa
Gene Name:	corin
Database Link:	NP_058565 Entrez Gene 53419 Mouse Q9Z319



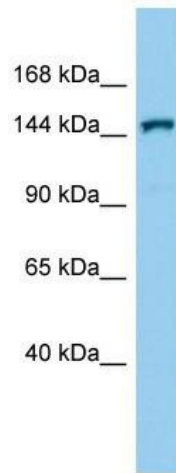
[View online »](#)

Background: Corin is a Serine-type endopeptidase involved in atrial natriuretic peptide hormone (NPPA) processing. It converts through proteolytic cleavage the non-functional propeptide NPPA into the active hormone, thereby regulating blood pressure in heart and promoting natriuresis, diuresis and vasodilation. Proteolytic cleavage of pro-NPPA also plays a role in female pregnancy by promoting trophoblast invasion and spiral artery remodeling in uterus. Corin also acts as a regulator of sodium reabsorption in kidney. May also process pro-NPPB the B-type natriuretic peptide.

Synonyms: ATC2; CRN; Lrp4; MGC119742; pro-ANP-convertase; PRSC; TMPRSS10

Note: Immunogen Sequence Homology: Human: 100%; Zebrafish: 100%; Dog: 93%; Pig: 93%; Rat: 93%; Rabbit: 93%; Guinea pig: 93%; Horse: 86%; Mouse: 86%; Bovine: 86%

Product images:



Host: Rabbit; Target Name: Corin; Sample Tissue: Mouse Testis lysates; Antibody Dilution: 1.0 ug/ml