

## Product datasheet for **TA341848**

### CORIN Rabbit Polyclonal Antibody

#### Product data:

Product Type:	Primary Antibodies
Applications:	WB
Recommended Dilution:	WB
Reactivity:	Human
Host:	Rabbit
Isotype:	IgG
Clonality:	Polyclonal
Immunogen:	The immunogen for anti-CORIN antibody: synthetic peptide directed towards the C terminal of human CORIN. Synthetic peptide located within the following region: HPRYSRAVVDYDISIVELSEDISETGYVRPVCLPNPEQWLEPDTYCYITG
Formulation:	Liquid. Purified antibody supplied in 1x PBS buffer with 0.09% (w/v) sodium azide and 2% sucrose. <i>Note that this product is shipped as lyophilized powder to China customers.</i>
Concentration:	lot specific
Conjugation:	Unconjugated
Storage:	Store at -20°C as received.
Stability:	Stable for 12 months from date of receipt.
Predicted Protein Size:	74 kDa
Gene Name:	corin, serine peptidase
Database Link:	<a href="#">NP_006578</a> <a href="#">Entrez Gene 10699 Human Q9Y5Q5</a>



[View online »](#)

**Background:**

This gene encodes a member of the type II transmembrane serine protease class of the trypsin superfamily. Members of this family are composed of multiple structurally distinct domains. The encoded protein converts pro-atrial natriuretic peptide to biologically active atrial natriuretic peptide, a cardiac hormone that regulates blood volume and pressure. This protein may also function as a pro-brain-type natriuretic peptide convertase. Multiple alternatively spliced transcript variants encoding different isoforms have been found for this gene. [provided by RefSeq, Jun 2013]

**Synonyms:**

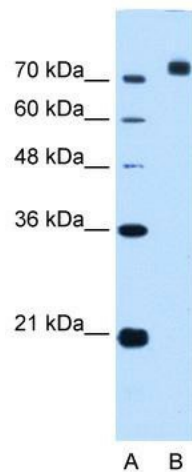
ATC2; CRN; Lrp4; PEE5; TMPRSS10

**Note:**

Immunogen Sequence Homology: Human: 100%; Rat: 92%; Pig: 86%; Horse: 86%; Rabbit: 86%; Mouse: 79%; Bovine: 79%; Guinea pig: 79%

**Protein Families:**

Druggable Genome, Protease, Transmembrane

**Product images:**

WB Suggested Anti-CORIN Antibody Titration: 2.5 ug/ml; Positive Control: HepG2 cell lysate