

Product datasheet for **TA341846**

Neuroglycan C (CSPG5) Rabbit Polyclonal Antibody

Product data:

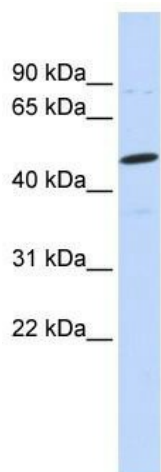
Product Type:	Primary Antibodies
Applications:	WB
Recommended Dilution:	WB
Reactivity:	Human
Host:	Rabbit
Isotype:	IgG
Clonality:	Polyclonal
Immunogen:	The immunogen for anti-CSPG5 antibody: synthetic peptide directed towards the N terminal of human CSPG5. Synthetic peptide located within the following region: LGGVTAEAGSGDAQALPATLQAPHEVLGQSIMPPAIPATEASGPPSPTP
Formulation:	Liquid. Purified antibody supplied in 1x PBS buffer with 0.09% (w/v) sodium azide and 2% sucrose. <i>Note that this product is shipped as lyophilized powder to China customers.</i>
Concentration:	lot specific
Conjugation:	Unconjugated
Storage:	Store at -20°C as received.
Stability:	Stable for 12 months from date of receipt.
Predicted Protein Size:	54 kDa
Gene Name:	chondroitin sulfate proteoglycan 5
Database Link:	NP_006565 Entrez Gene 10675 Human O95196
Background:	The protein encoded byThis gene is a proteoglycan that may function as a neural growth and differentiation factor. Several transcript variants encoding different isoforms have been found forThis gene. [provided by RefSeq, May 2011]
Synonyms:	NGC
Note:	Immunogen Sequence Homology: Rat: 100%; Human: 100%; Mouse: 100%; Horse: 93%; Bovine: 93%; Pig: 86%; Guinea pig: 86%; Dog: 79%



[View online »](#)

Protein Families: ES Cell Differentiation/IPS, Transmembrane

Product images:



WB Suggested Anti-CSPG5 Antibody Titration: 0.2-1 ug/ml; ELISA Titer: 1: 62500; Positive Control: MCF7 cell lysate