

Product datasheet for **TA341845**

Wnt6 Rabbit Polyclonal Antibody

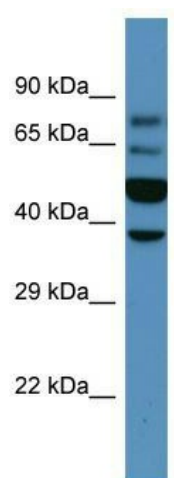
Product data:

Product Type:	Primary Antibodies
Applications:	WB
Recommended Dilution:	WB
Reactivity:	Mouse
Host:	Rabbit
Isotype:	IgG
Clonality:	Polyclonal
Immunogen:	The immunogen for Anti-Wnt6 antibody is: synthetic peptide directed towards the middle region of RAT Wnt6. Synthetic peptide located within the following region: PGPTGSPDASAAWEWGGCGDDVDFGDEKSRLFMDAQHKRGRGDIRALVQL
Formulation:	Liquid. Purified antibody supplied in 1x PBS buffer with 0.09% (w/v) sodium azide and 2% sucrose. <i>Note that this product is shipped as lyophilized powder to China customers.</i>
Concentration:	lot specific
Purification:	Affinity Purified
Conjugation:	Unconjugated
Storage:	Store at -20°C as received.
Stability:	Stable for 12 months from date of receipt.
Predicted Protein Size:	40 kDa
Gene Name:	wingless-type MMTV integration site family, member 6
Database Link:	NP_001101696 Entrez Gene 22420 Mouse
Background:	Wnt6 is a ligand for members ofThe frizzled family of seven transmembrane receptors.
Synonyms:	WNT6
Note:	Immunogen Sequence Homology: Dog: 100%; Pig: 100%; Rat: 100%; Horse: 100%; Human: 100%; Mouse: 100%; Bovine: 100%; Rabbit: 100%; Guinea pig: 100%; Zebrafish: 92%



[View online »](#)

Product images:



Host: Rabbit; Target Name: Wnt6; Sample Tissue: Mouse Kidney lysates; Antibody Dilution: 1.0 ug/ml