

Product datasheet for **TA341844**

WNT6 Rabbit Polyclonal Antibody

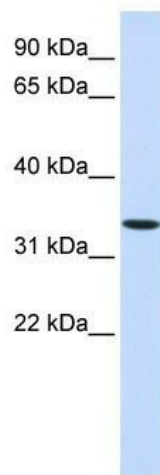
Product data:

Product Type:	Primary Antibodies
Applications:	WB
Recommended Dilution:	WB
Reactivity:	Human
Host:	Rabbit
Isotype:	IgG
Clonality:	Polyclonal
Immunogen:	The immunogen for anti-WNT6 antibody: synthetic peptide directed towards the middle region of human WNT6. Synthetic peptide located within the following region: ERFHGASRVMTNDGKALLPAVRTLKPPGRADLLYAADSPDFCAPNRRTG
Formulation:	Liquid. Purified antibody supplied in 1x PBS buffer with 0.09% (w/v) sodium azide and 2% sucrose. <i>Note that this product is shipped as lyophilized powder to China customers.</i>
Concentration:	lot specific
Conjugation:	Unconjugated
Storage:	Store at -20°C as received.
Stability:	Stable for 12 months from date of receipt.
Predicted Protein Size:	37 kDa
Gene Name:	Wnt family member 6
Database Link:	NP_006513 Entrez Gene 7475 Human Q9Y6F9



[View online »](#)

Background:	The WNT gene family consists of structurally related genes which encode secreted signaling proteins. These proteins have been implicated in oncogenesis and in several developmental processes, including regulation of cell fate and patterning during embryogenesis. This gene is a member of the WNT gene family. It is overexpressed in cervical cancer cell line and strongly coexpressed with another family member, WNT10A, in colorectal cancer cell line. The gene overexpression may play key roles in carcinogenesis. This gene and the WNT10A gene are clustered in the chromosome 2q35 region. The protein encoded by this gene is 97% identical to the mouse Wnt6 protein at the amino acid level. [provided by RefSeq, Jul 2008]
Synonyms:	member 6; wingless-type MMTV integration site family
Note:	Immunogen Sequence Homology: Dog: 100%; Pig: 100%; Rat: 100%; Human: 100%; Mouse: 100%; Bovine: 100%; Rabbit: 100%; Guinea pig: 100%
Protein Families:	Adult stem cells, Cancer stem cells, ES Cell Differentiation/IPS, Secreted Protein, Stem cell relevant signaling - Wnt Signaling pathway, Transmembrane
Protein Pathways:	Basal cell carcinoma, Hedgehog signaling pathway, Melanogenesis, Pathways in cancer, Wnt signaling pathway

Product images:

WB Suggested Anti-WNT6 Antibody Titration: 0.2-1 ug/ml; ELISA Titer: 1: 312500; Positive Control: 293T cell lysate. WNT6 is supported by BioGPS gene expression data to be expressed in HEK293T