

Product datasheet for **TA341843**

EVI2B Rabbit Polyclonal Antibody

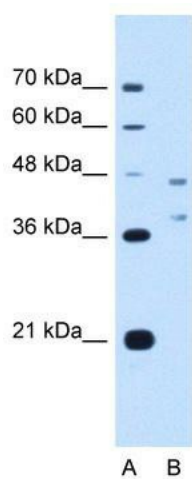
Product data:

Product Type:	Primary Antibodies
Applications:	WB
Recommended Dilution:	WB
Reactivity:	Human
Host:	Rabbit
Isotype:	IgG
Clonality:	Polyclonal
Immunogen:	The immunogen for anti-EVI2B antibody: synthetic peptide directed towards the middle region of human EVI2B. Synthetic peptide located within the following region: DICMDNIRENEISTKRSTIISLTPWKPSKSTLLADDLEIKLFESSENIED
Formulation:	Liquid. Purified antibody supplied in 1x PBS buffer with 0.09% (w/v) sodium azide and 2% sucrose.
Concentration:	lot specific
Conjugation:	Unconjugated
Storage:	Store at -20°C as received.
Stability:	Stable for 12 months from date of receipt.
Predicted Protein Size:	49 kDa
Gene Name:	ecotropic viral integration site 2B
Database Link:	NP_006486 Entrez Gene 2124 Human P34910
Background:	The function remains known.
Synonyms:	CD361; D17S376; EVDB
Note:	Immunogen Sequence Homology: Human: 100%; Rat: 93%; Mouse: 93%; Bovine: 93%; Dog: 86%; Pig: 86%; Horse: 86%; Rabbit: 86%; Guinea pig: 86%
Protein Families:	Transmembrane



[View online »](#)

Product images:



WB Suggested Anti-EVI2B Antibody Titration: 2.5 ug/ml; Positive Control: HepG2 cell lysate