

## Product datasheet for **TA341840**

### ERLIN1 Rabbit Polyclonal Antibody

#### Product data:

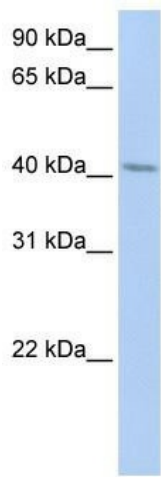
|                         |  |
|-------------------------|--|
| Product Type:           | Primary Antibodies   |
| Applications:           | WB   |
| Recommended Dilution:   | WB   |
| Reactivity:             | Human  |
| Host:                   | Rabbit   |
| Isotype:                | IgG  |
| Clonality:              | Polyclonal   |
| Immunogen:              | The immunogen for anti-ERLIN1 antibody: synthetic peptide directed towards the N terminal of human ERLIN1. Synthetic peptide located within the following region:<br>KNVPCGTSGGVMIIYDRIEVNMLAPYAVFDIVRNYTADYDKTLIFNKIH |
| Formulation:            | Liquid. Purified antibody supplied in 1x PBS buffer with 0.09% (w/v) sodium azide and 2% sucrose.<br><i>Note that this product is shipped as lyophilized powder to China customers.</i>                                |
| Concentration:          | lot specific   |
| Conjugation:            | Unconjugated   |
| Storage:                | Store at -20°C as received.  |
| Stability:              | Stable for 12 months from date of receipt.   |
| Predicted Protein Size: | 39 kDa   |
| Gene Name:              | ER lipid raft associated 1   |
| Database Link:          | <a href="#">NP_006450</a><br><a href="#">Entrez Gene 10613 Human</a><br><a href="#">O75477</a>   |
| Background:             | Erlin-1 belongs toThe band 7/mec-2 family. Erlin-1 and erlin-2 are novel members ofThe prohibitin family of proteins that define lipid-raft-like domains ofThe ER.   |
| Synonyms:               | C10orf69; Erlin-1; KE04; KEO4; SPFH1; SPG62  |
| Note:                   | Immunogen Sequence Homology: Dog: 100%; Pig: 100%; Rat: 100%; Horse: 100%; Human: 100%; Mouse: 100%; Rabbit: 100%; Zebrafish: 100%; Guinea pig: 100%; Goat: 92%; Bovine: 92%   |



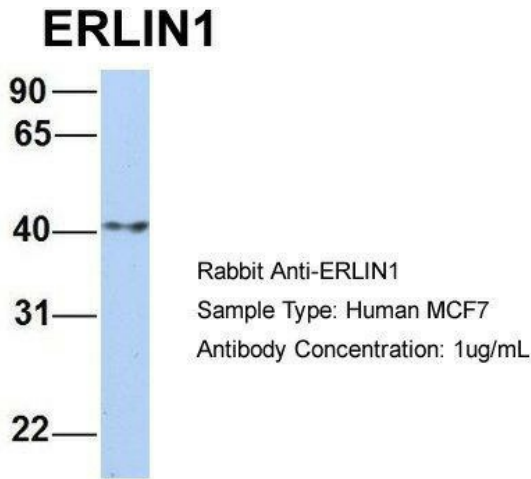
[View online »](#)

Protein Families: Transmembrane

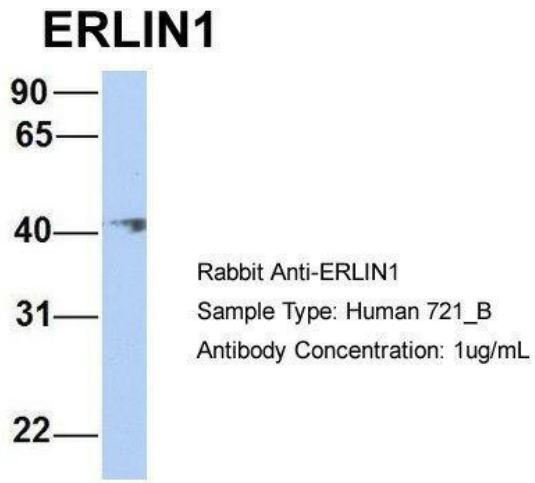
**Product images:**



WB Suggested Anti-ERLIN1 Antibody Titration: 0.2-1 ug/ml; ELISA Titer: 1: 62500; Positive Control: HepG2 cell lysate.ERLIN1 is strongly supported by BioGPS gene expression data to be expressed in Human HepG2 cells



Host: Rabbit; Target Name: ERLIN1; Sample Tissue: Human MCF7; Antibody Dilution: 1.0 ug/ml.ERLIN1 is supported by BioGPS gene expression data to be expressed in MCF7



Host: Rabbit; Target Name: ERLIN1; Sample Tissue: Human 721\_B; Antibody Dilution: 1.0 ug/ml. ERLIN1 is supported by BioGPS gene expression data to be expressed in 721\_B