

## Product datasheet for **TA341839**

### Nr1i3 Rabbit Polyclonal Antibody

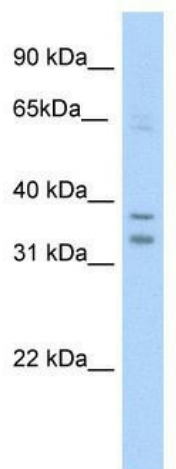
#### Product data:

Product Type:	Primary Antibodies
Applications:	IHC, WB
Recommended Dilution:	WB, IHC
Reactivity:	Mouse
Host:	Rabbit
Isotype:	IgG
Clonality:	Polyclonal
Immunogen:	The immunogen for anti-NR113 antibody: synthetic peptide directed towards the C terminal of mouse NR113. Synthetic peptide located within the following region: QQSRLQSRFLYAKLMGLLADLR SINNAYS YELQRLEELSAMTPLLGEICS
Formulation:	Liquid. Purified antibody supplied in 1x PBS buffer with 0.09% (w/v) sodium azide and 2% sucrose. <i>Note that this product is shipped as lyophilized powder to China customers.</i>
Concentration:	lot specific
Conjugation:	Unconjugated
Storage:	Store at -20°C as received.
Stability:	Stable for 12 months from date of receipt.
Predicted Protein Size:	39 kDa
Gene Name:	nuclear receptor subfamily 1, group I, member 3
Database Link:	<a href="#">NP_033933</a> <a href="#">Entrez Gene 12355 Mouse</a> <a href="#">O35627</a>
Background:	NR113 mediates the induction of transcription of cytochrome P450 (CYP) genes by phenobarbital (PB) and PB-type inducers. NR113 activation induces hepatic expression of detoxification enzymes and transporters and increases liver size. NR113 can also regulate both liver homeostasis and tumorigenesis in response to xenobiotic stresses.
Synonyms:	CAR; CAR1; MB67; MGC97144; MGC97209; MGC150433; OTTHUMP00000032246
Note:	Immunogen Sequence Homology: Mouse: 100%

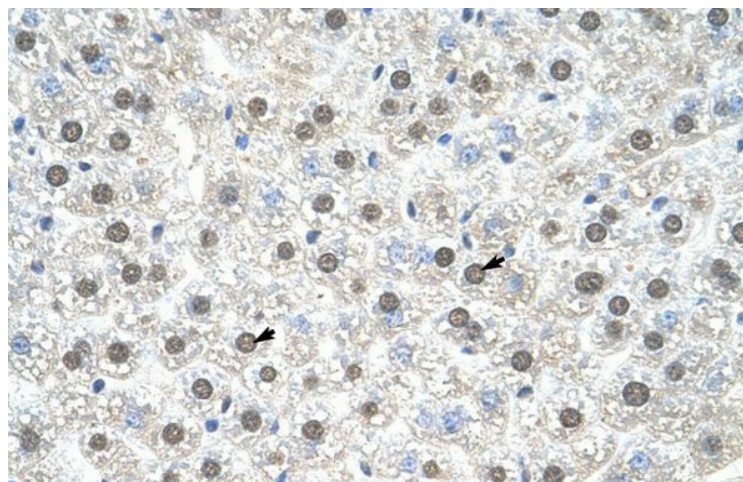


[View online »](#)

Product images:



WB Suggested Anti-NR113 Antibody Titration: 5.0 ug/ml; Positive Control: SP2/0 cell lysate



Mouse Liver