

Product datasheet for **TA341838**

Camk4 Rabbit Polyclonal Antibody

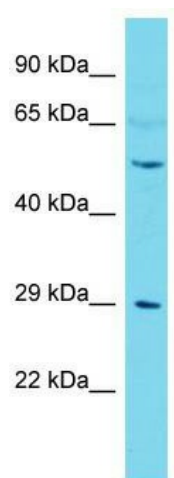
Product data:

Product Type:	Primary Antibodies
Applications:	WB
Recommended Dilution:	WB
Reactivity:	Mouse
Host:	Rabbit
Isotype:	IgG
Clonality:	Polyclonal
Immunogen:	The immunogen for Anti-Camk4 antibody is: synthetic peptide directed towards the C-terminal region of Mouse Camk4. Synthetic peptide located within the following region: DSTDLLGKKMQEEDQEEDQVEAEASADEMRKLQSEEEVKDAGVKEEETSS
Formulation:	Liquid. Purified antibody supplied in 1x PBS buffer with 0.09% (w/v) sodium azide and 2% sucrose. <i>Note that this product is shipped as lyophilized powder to China customers.</i>
Concentration:	lot specific
Conjugation:	Unconjugated
Storage:	Store at -20°C as received.
Stability:	Stable for 12 months from date of receipt.
Predicted Protein Size:	52 kDa
Gene Name:	calcium/calmodulin-dependent protein kinase IV
Database Link:	NP_033923 Entrez Gene 12326 Mouse
Background:	The function ofThis protein remains unknown.
Synonyms:	CaMK-GR; MGC36771
Note:	Immunogen Sequence Homology: Mouse: 100%



[View online »](#)

Product images:



Host: Rabbit; Target Name: Camk4; Sample
Tissue: Mouse Testis lysates; Antibody Dilution:
1.0 ug/ml