

## Product datasheet for **TA341837**

### Camk4 Rabbit Polyclonal Antibody

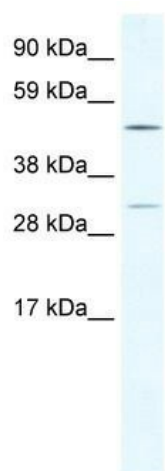
#### Product data:

Product Type:	Primary Antibodies
Applications:	WB
Recommended Dilution:	WB
Reactivity:	Human
Host:	Rabbit
Isotype:	IgG
Clonality:	Polyclonal
Immunogen:	The immunogen for anti-CAMK4 antibody: synthetic peptide directed towards the C terminal of mouse CAMK4. Synthetic peptide located within the following region: VKAVVASSRLGSASSSHTSIQENHKASSDPPSTQDAKDSTDLLGKKMQEE
Formulation:	Liquid. Purified antibody supplied in 1x PBS buffer with 0.09% (w/v) sodium azide and 2% sucrose. <i>Note that this product is shipped as lyophilized powder to China customers.</i>
Concentration:	lot specific
Conjugation:	Unconjugated
Storage:	Store at -20°C as received.
Stability:	Stable for 12 months from date of receipt.
Predicted Protein Size:	52 kDa
Gene Name:	calcium/calmodulin-dependent protein kinase IV
Database Link:	<a href="#">NP_033923</a> <a href="#">Entrez Gene 814 Human</a>
Background:	CAMK4 plays key roles inThe function and development ofThe cerebellu
Synonyms:	CaMK-GR; MGC36771
Note:	Immunogen Sequence Homology: Mouse: 100%



[View online »](#)

## Product images:



WB Suggested Anti-CAMK4 Antibody Titration: 2.5 ug/ml; ELISA Titer: 1:62500; Positive Control: Human Thymus