

## Product datasheet for **TA341834**

### ATF 4 (ATF4) Rabbit Polyclonal Antibody

#### Product data:

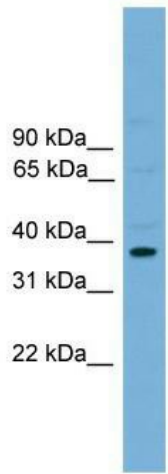
Product Type:	Primary Antibodies
Applications:	IF, WB
Recommended Dilution:	WB, IF
Reactivity:	Mouse
Host:	Rabbit
Isotype:	IgG
Clonality:	Polyclonal
Immunogen:	The immunogen for anti-Atf4 antibody: synthetic peptide corresponding to a region of Mouse. Synthetic peptide located within the following region: TRYRQKKRAEQEALTGECKELEKKNEALKEKADSLAKEIQYLKDLIEEVR
Formulation:	Liquid. Purified antibody supplied in 1x PBS buffer with 0.09% (w/v) sodium azide and 2% sucrose. <i>Note that this product is shipped as lyophilized powder to China customers.</i>
Concentration:	lot specific
Conjugation:	Unconjugated
Storage:	Store at -20°C as received.
Stability:	Stable for 12 months from date of receipt.
Predicted Protein Size:	38 kDa
Gene Name:	activating transcription factor 4
Database Link:	<a href="#">NP_001666</a> <a href="#">Entrez Gene 11911 Mouse P18848</a>
Background:	The function of This protein remains unknown.
Synonyms:	CREB-2; CREB2; TAXREB67; TXREB
Note:	Immunogen Sequence Homology: Pig: 100%; Rat: 100%; Mouse: 100%; Sheep: 100%; Bovine: 100%; Guinea pig: 100%; Dog: 93%; Human: 93%; Horse: 79%
Protein Families:	Transcription Factors



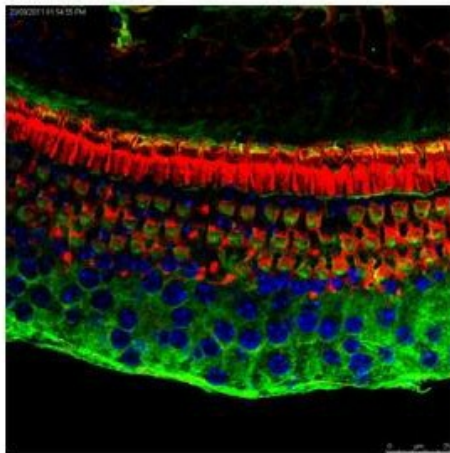
[View online »](#)

**Protein Pathways:** GnRH signaling pathway, Long-term potentiation, MAPK signaling pathway, Neurotrophin signaling pathway, Prostate cancer

**Product images:**



WB Suggested Anti-Atf4 Antibody Titration: 0.2-1 ug/ml; Positive Control: Mouse Brain



organ of Corti