

Product datasheet for **TA341833**

Atf4 Rabbit Polyclonal Antibody

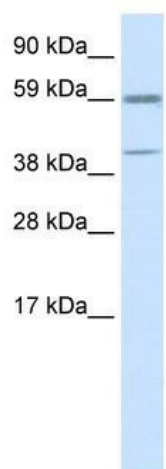
Product data:

Product Type:	Primary Antibodies
Applications:	IHC, WB
Recommended Dilution:	WB, IHC
Reactivity:	Mouse, Human
Host:	Rabbit
Isotype:	IgG
Clonality:	Polyclonal
Immunogen:	The immunogen for anti-ATF4 antibody: synthetic peptide directed towards the N terminal of mouse ATF4. Synthetic peptide located within the following region: MALFTKSSSSVAVTDKDTFELSTFLESSKAPQHDRDELPEQRSVGGGLDD
Formulation:	Liquid. Purified antibody supplied in 1x PBS buffer with 0.09% (w/v) sodium azide and 2% sucrose. <i>Note that this product is shipped as lyophilized powder to China customers.</i>
Concentration:	lot specific
Conjugation:	Unconjugated
Storage:	Store at -20°C as received.
Stability:	Stable for 12 months from date of receipt.
Predicted Protein Size:	42 kDa
Gene Name:	activating transcription factor 4
Database Link:	NP_033846 Entrez Gene 468 Human Entrez Gene 11911 Mouse Q06507
Background:	Atf4 binds to asymmetric cAMP response elements (CRE) as a heterodimer and to palindromic CRE's as a homodimer.
Synonyms:	CREB-2; CREB2; OTTHUMP00000199130; TAXREB67; TXREB
Note:	Immunogen Sequence Homology: Mouse: 100%

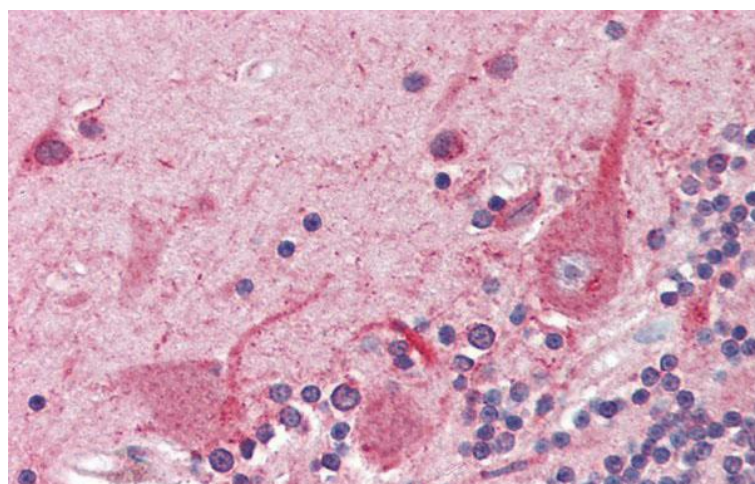


[View online »](#)

Product images:



WB Suggested Anti-ATF4 Antibody Titration: 0.125 ug/ml; ELISA Titer: 1:62500; Positive Control: NIH/3T3 cell lysate



Immunohistochemistry with Human Braun, cerebellum tissue at an antibody concentration of 5.0 ug/ml using anti-ATF4 antibody