

Product datasheet for **TA341829**

Zfy1 Rabbit Polyclonal Antibody

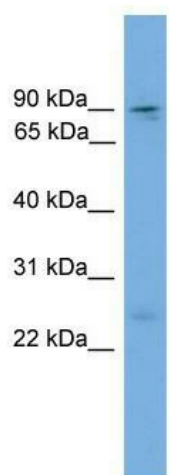
Product data:

Product Type:	Primary Antibodies
Applications:	WB
Recommended Dilution:	WB
Reactivity:	Mouse
Host:	Rabbit
Isotype:	IgG
Clonality:	Polyclonal
Immunogen:	The immunogen for anti-Zfy1 antibody: synthetic peptide directed towards the middle region of mouse Zfy1. Synthetic peptide located within the following region: VDELGETIHAVESETKNGNEAEVTDQSTSIRVPRVNIYMSASDSQKEED
Formulation:	Liquid. Purified antibody supplied in 1x PBS buffer with 0.09% (w/v) sodium azide and 2% sucrose. <i>Note that this product is shipped as lyophilized powder to China customers.</i>
Concentration:	lot specific
Conjugation:	Unconjugated
Storage:	Store at -20°C as received.
Stability:	Stable for 12 months from date of receipt.
Predicted Protein Size:	88 kDa
Gene Name:	zinc finger protein 1, Y-linked
Database Link:	NP_033596 Entrez Gene 22767 Mouse P10925
Background:	Probable transcriptional activator. Binds toThe consensus sequence 5'-AGGCCY-3'.
Synonyms:	Zfy-1
Note:	Immunogen Sequence Homology: Mouse: 100%



[View online »](#)

Product images:



WB Suggested Anti-Zfy1 Antibody Titration: 0.2-1 ug/ml; ELISA Titer: 1:12500; Positive Control: Mouse Thymus