

Product datasheet for **TA341827**

Zfpm1 Rabbit Polyclonal Antibody

Product data:

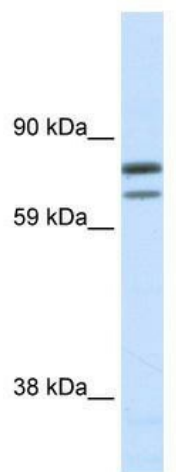
Product Type:	Primary Antibodies
Applications:	WB
Recommended Dilution:	WB
Reactivity:	Mouse
Host:	Rabbit
Isotype:	IgG
Clonality:	Polyclonal
Immunogen:	The immunogen for anti-ZFPM1 antibody: synthetic peptide directed towards the N terminal of mouse ZFPM1. Synthetic peptide located within the following region: MSRRKQSNPRQIKRSLRDMEAGEEAKAMDSSPKEQAPDPEAPAIEEPPS
Formulation:	Liquid. Purified antibody supplied in 1x PBS buffer with 0.09% (w/v) sodium azide and 2% sucrose. <i>Note that this product is shipped as lyophilized powder to China customers.</i>
Concentration:	lot specific
Conjugation:	Unconjugated
Storage:	Store at -20°C as received.
Stability:	Stable for 12 months from date of receipt.
Predicted Protein Size:	109 kDa
Gene Name:	zinc finger protein, multitype 1
Database Link:	NP_033595 Entrez Gene 22761 Mouse O35615
Background:	Zfpm1 is a transcription regulator that plays an essential role in erythroid and megakaryocytic cell differentiation. It is essential cofactor that acts viaThe formation of a heterodimer with transcription factors ofThe GATA family. Zfpm1 may be involved in regulation of some genes in gonads and involved in cardiac development, in a non-redundant way with ZFPM2/FOG2.
Synonyms:	FOG; FOG-1; FOG1; ZNF89A; ZNF408



[View online »](#)

Note: Immunogen Sequence Homology: Mouse: 100%; Rat: 85%

Product images:



WB Suggested Anti-ZFPM1 Antibody Titration:
0.2-1 ug/ml; ELISA Titer: 1:62500; Positive Control:
SP2/0 cell lysate