

## Product datasheet for **TA341825**

### VAX1 Rabbit Polyclonal Antibody

#### Product data:

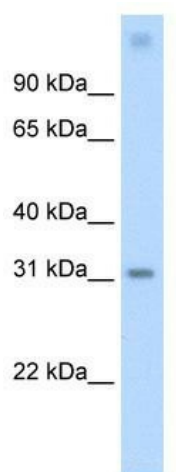
Product Type:	Primary Antibodies
Applications:	WB
Recommended Dilution:	WB
Reactivity:	Mouse
Host:	Rabbit
Isotype:	IgG
Clonality:	Polyclonal
Immunogen:	The immunogen for anti-Vax1 antibody: synthetic peptide directed towards the middle region of mouse Vax1. Synthetic peptide located within the following region: RRETLARQLNLSETQVKVWFQNRRTKQKDKDQKDSSELRVSVSETAATCS
Formulation:	Liquid. Purified antibody supplied in 1x PBS buffer with 0.09% (w/v) sodium azide and 2% sucrose. <i>Note that this product is shipped as lyophilized powder to China customers.</i>
Concentration:	lot specific
Conjugation:	Unconjugated
Storage:	Store at -20°C as received.
Stability:	Stable for 12 months from date of receipt.
Predicted Protein Size:	37 kDa
Gene Name:	ventral anterior homeobox 1
Database Link:	<a href="#">NP_001106175</a> <a href="#">Entrez Gene 22326 Mouse</a> <a href="#">Q5SQQ9</a>
Background:	Vax1 is required for axon guidance and major tract formation inThe developing forebrain. It may contribute toThe differentiation ofThe neuroretina, pigmented epithelium and optic stalk.
Synonyms:	MCOPS11
Note:	Immunogen Sequence Homology: Dog: 100%; Pig: 100%; Rat: 100%; Horse: 100%; Human: 100%; Mouse: 100%; Bovine: 100%; Rabbit: 100%; Zebrafish: 100%; Guinea pig: 100%



[View online »](#)

Protein Families: Transcription Factors

### Product images:



WB Suggested Anti-Vax1 Antibody Titration: 0.2-1 ug/ml; Positive Control: NIH/3T3 cell lysate