

## Product datasheet for **TA341824**

### Ttf1 Rabbit Polyclonal Antibody

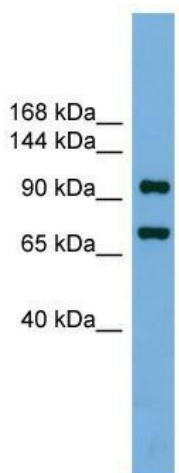
#### Product data:

Product Type:	Primary Antibodies
Applications:	WB
Recommended Dilution:	WB
Reactivity:	Mouse
Host:	Rabbit
Isotype:	IgG
Clonality:	Polyclonal
Immunogen:	The immunogen for anti-Ttf1 antibody: synthetic peptide directed towards the n terminal of mouse Ttf1. Synthetic peptide located within the following region: RRASQTPAQETLESEWPQKAKRKKRRREPQTPAQETLESEWPQKAKKKKR
Formulation:	Liquid. Purified antibody supplied in 1x PBS buffer with 0.09% (w/v) sodium azide and 2% sucrose.
Concentration:	lot specific
Conjugation:	Unconjugated
Storage:	Store at -20°C as received.
Stability:	Stable for 12 months from date of receipt.
Predicted Protein Size:	98
Gene Name:	transcription termination factor, RNA polymerase I
Database Link:	<a href="#">NP_033468</a> <a href="#">Entrez Gene 22130 Mouse</a> <a href="#">Q62187</a>
Background:	Ttf1 is a multifunctional nucleolar protein that terminates ribosomal gene transcription, mediates replication fork arrest and regulates RNA polymerase I transcription on chromatin. Ttf1 plays a dual role in rDNA regulation, being involved in both activation and silencing of rDNA transcription. Ttf1 interaction with BAZ2A/TIP5 recovers DNA-binding activity.
Synonyms:	NKX2-1; NKX2A; TITF1; TTF-1; TTF-I
Note:	Immunogen Sequence Homology: Mouse: 100%; Rat: 91%

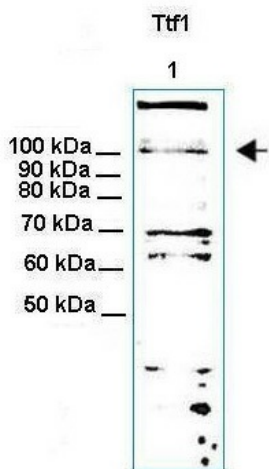


[View online »](#)

Product images:



WB Suggested Anti-Ttf1 Antibody Titration: 0.2-1 ug/ml; Positive Control: Mouse Heart



Lanes: ; 30ug NIH3T3 cell lysate; Primary Antibody Dilution: ; 1:1000; Secondary Antibody: ; Anti-rabbit HRP; Secondary Antibody Dilution: ; 1: 5000; Gene Name: ; Ttf1; Submitted by: ; Thomas Moss;