

Product datasheet for **TA341823**

TOB (TOB1) Rabbit Polyclonal Antibody

Product data:

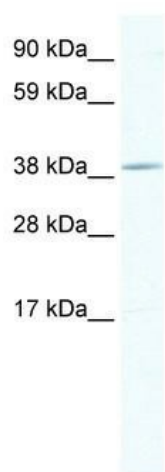
Product Type:	Primary Antibodies
Applications:	WB
Recommended Dilution:	WB
Reactivity:	Mouse
Host:	Rabbit
Isotype:	IgG
Clonality:	Polyclonal
Immunogen:	The immunogen for anti-TOB1 antibody: synthetic peptide directed towards the middle region of mouse TOB1. Synthetic peptide located within the following region: QPLTFTTATFAATKFGSTKMKNSGRSSKVARTSPINLGLTVNVNDLLKQK
Formulation:	Liquid. Purified antibody supplied in 1x PBS buffer with 0.09% (w/v) sodium azide and 2% sucrose. <i>Note that this product is shipped as lyophilized powder to China customers.</i>
Concentration:	lot specific
Conjugation:	Unconjugated
Storage:	Store at -20°C as received.
Stability:	Stable for 12 months from date of receipt.
Predicted Protein Size:	40 kDa
Gene Name:	transducer of ERBB2, 1
Database Link:	NP_005740 Entrez Gene 22057 Mouse P50616
Background:	Anti-proliferative protein;The function is mediated by association with deadenylase subunits ofThe CCR4-NOT complex.
Synonyms:	APRO5; APRO6; PIG49; TOB; TROB; TROB1
Note:	Immunogen Sequence Homology: Mouse: 100%; Dog: 93%; Pig: 93%; Rat: 93%; Horse: 93%; Human: 93%; Bovine: 93%



[View online »](#)

Protein Families: Druggable Genome

Product images:



WB Suggested Anti-TOB1 Antibody Titration: 1.25 ug/ml; ELISA Titer: 1:62500; Positive Control: NIH/3T3 cell lysate