

## Product datasheet for **TA341822**

### Thrb Rabbit Polyclonal Antibody

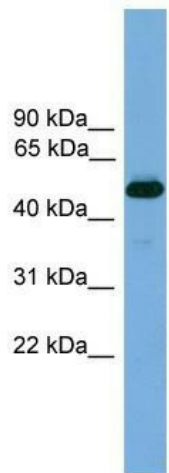
#### Product data:

|                         |   |
|-------------------------|---|
| Product Type:           | Primary Antibodies  |
| Applications:           | WB  |
| Recommended Dilution:   | WB, ChIP  |
| Reactivity:             | Mouse   |
| Host:                   | Rabbit  |
| Isotype:                | IgG   |
| Clonality:              | Polyclonal  |
| Immunogen:              | The immunogen for anti-Thrb antibody: synthetic peptide directed towards the n terminal of mouse Thrb. Synthetic peptide located within the following region:<br>MNYCMPEVHEVCPAASSNCYMQVTDYLAILEDSPALSGRDVQAVPSSSIY |
| Formulation:            | Liquid. Purified antibody supplied in 1x PBS buffer with 0.09% (w/v) sodium azide and 2% sucrose.<br><i>Note that this product is shipped as lyophilized powder to China customers.</i>                             |
| Concentration:          | lot specific  |
| Conjugation:            | Unconjugated  |
| Storage:                | Store at -20°C as received.   |
| Stability:              | Stable for 12 months from date of receipt.  |
| Predicted Protein Size: | 54  |
| Gene Name:              | thyroid hormone receptor beta   |
| Database Link:          | <a href="#">NP_033406</a><br><a href="#">Entrez Gene 21834 Mouse P37242</a>   |
| Background:             | Nuclear hormone receptor that can act as a repressor or activator of transcription. High affinity receptor for thyroid hormones, including triiodothyronine and thyroxine.  |
| Synonyms:               | ERBA-BETA; ERBA2; GRTH; MGC126109; MGC126110; NR1A2; OTTHUMP00000208475; OTTHUMP00000208531; PRTH; THR1; THRB1; THRB2   |
| Note:                   | Immunogen Sequence Homology: Mouse: 100%; Rat: 86%  |



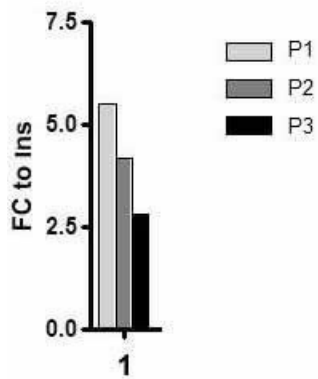
[View online »](#)

Product images:

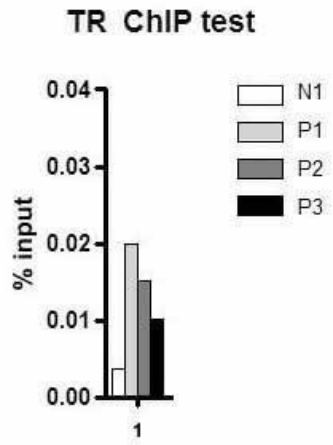


WB Suggested Anti-Thrb Antibody Titration: 0.2-1 ug/ml; Positive Control: Mouse Muscle

TR ChIP test



Application: ChIP; Sample Type: mouse liver tissue; Chromatin Used: 100ug tissue; Antibody Used: 10ug ; Image Submitted by: Joanna DiSpirito; University of Pennsylvania



Application: CHIP; Sample Type: mouse liver tissue; Chromatin Used: 100ug tissue; Antibody Used: 10ug ; Image Submitted by: Joanna DiSpirito; University of Pennsylvania