

Product datasheet for **TA341820**

Tfam Rabbit Polyclonal Antibody

Product data:

Product Type:	Primary Antibodies
Applications:	IHC, WB
Recommended Dilution:	WB, IHC
Reactivity:	Mouse
Host:	Rabbit
Isotype:	IgG
Clonality:	Polyclonal
Immunogen:	The immunogen for anti-Tfam antibody: synthetic peptide directed towards the C terminal of mouse Tfam. Synthetic peptide located within the following region: FQEAKDDSAQGKLVNEAWKNLSPEEKQAYIQLAKDDRRIRYDNEMKSWE
Formulation:	Liquid. Purified antibody supplied in 1x PBS buffer with 0.09% (w/v) sodium azide and 2% sucrose. <i>Note that this product is shipped as lyophilized powder to China customers.</i>
Concentration:	lot specific
Conjugation:	Unconjugated
Storage:	Store at -20°C as received.
Stability:	Stable for 12 months from date of receipt.
Predicted Protein Size:	27 kDa
Gene Name:	transcription factor A, mitochondrial
Database Link:	NP_033386 Entrez Gene 21780 Mouse P40630
Background:	TFAM a mitochondrial transcription factor that is a key activator of mitochondrial transcription as well as a participant in mitochondrial genome replication. Studies in mice have demonstrated that this protein is required to regulate the mitochondrial genome copy number and is essential for embryonic development. A mouse model for Kearns Sayre syndrome was produced when expression of the gene was eliminated by targeted disruption in heart and muscle cells.

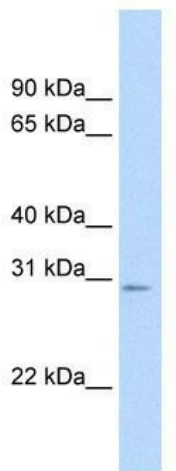


[View online »](#)

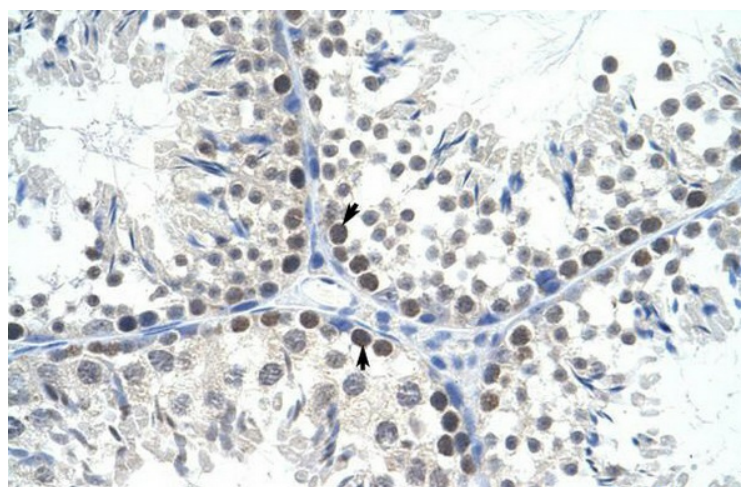
Synonyms: MTTF1; MtTF1; MTTFA; mtTFA; OTTHUMP00000019633; TCF6; TCF6L1; TCF6L2; TCF6L3

Note: Immunogen Sequence Homology: Rat: 100%; Mouse: 100%; Bovine: 79%; Rabbit: 79%

Product images:



WB Suggested Anti-Tfam Antibody Titration: 0.2-1 ug/ml; Positive Control: SP2/O cell lysate



Mouse testicle