

Product datasheet for **TA341817**

Tcea2 Rabbit Polyclonal Antibody

Product data:

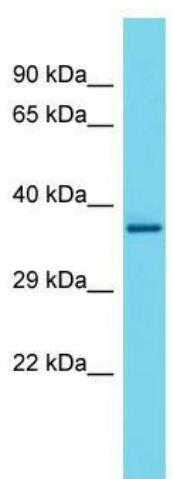
Product Type:	Primary Antibodies
Applications:	WB
Recommended Dilution:	WB
Reactivity:	Rat
Host:	Rabbit
Isotype:	IgG
Clonality:	Polyclonal
Immunogen:	The immunogen for Anti-Tcea2 antibody is: synthetic peptide directed towards the middle region of Rat Tcea2. Synthetic peptide located within the following region: SVNALRKQSSDEELIALAKSLIKSWKLLDVS DGKSRDQGRGTP LPTSSS
Formulation:	Liquid. Purified antibody supplied in 1x PBS buffer with 0.09% (w/v) sodium azide and 2% sucrose. <i>Note that this product is shipped as lyophilized powder to China customers.</i>
Concentration:	lot specific
Conjugation:	Unconjugated
Storage:	Store at -20°C as received.
Stability:	Stable for 12 months from date of receipt.
Predicted Protein Size:	32 kDa
Gene Name:	transcription elongation factor A (SII), 2
Database Link:	NP_033352 Entrez Gene 29575 Rat Q9QVN7
Background:	SII class transcription elongation factor; releases RNA polymerase II ternary complexes from transcriptional arrest at arresting sites; necessary for RNA polymerase II transcription elongation [RGD, Feb 2006]. ##Evidence-Data-START## Transcript exon combination :: D12927.1 [ECO:0000332] RNAseq introns :: single sample supports all introns ERS160522, ERS160537 [ECO:0000348] ##Evidence-Data-END##
Synonyms:	OTTHUMP00000031638; TFIS



[View online »](#)

Note: Immunogen Sequence Homology: Mouse: 100%; Rat: 93%

Product images:



Host: Rabbit; Target Name: Tcea2; Sample Tissue: Rat Spleen lysates; Antibody Dilution: 1.0 ug/ml