

Product datasheet for **TA341816**

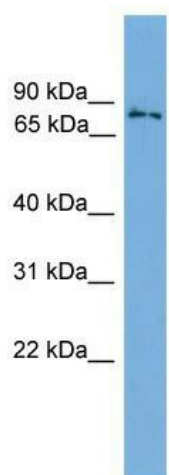
TBR1 Rabbit Polyclonal Antibody

Product data:

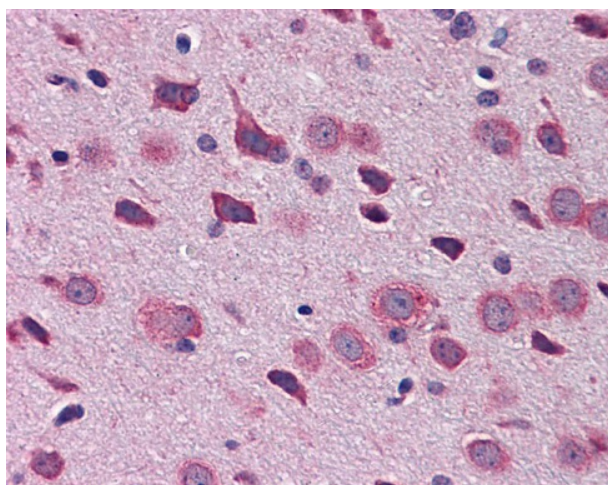
Product Type:	Primary Antibodies
Applications:	IHC, WB
Recommended Dilution:	WB, IHC
Reactivity:	Mouse
Host:	Rabbit
Isotype:	IgG
Clonality:	Polyclonal
Immunogen:	The immunogen for anti-Tbr1 antibody: synthetic peptide directed towards the n terminal of mouse Tbr1. Synthetic peptide located within the following region: PLKKITRGMTNQSDTDNFPDSKSPGDVQRSLSPVLDGVSELRHSFDGS
Formulation:	Liquid. Purified antibody supplied in 1x PBS buffer with 0.09% (w/v) sodium azide and 2% sucrose.
Concentration:	lot specific
Conjugation:	Unconjugated
Storage:	Store at -20°C as received.
Stability:	Stable for 12 months from date of receipt.
Predicted Protein Size:	74
Gene Name:	T-box, brain 1
Database Link:	NP_006584 Entrez Gene 21375 Mouse Q16650
Background:	Probable transcriptional regulator involved in developmental processes. Required for normal brain development.
Synonyms:	TBR-1; TES-56
Note:	Immunogen Sequence Homology: Dog: 100%; Pig: 100%; Rat: 100%; Horse: 100%; Human: 100%; Mouse: 100%; Bovine: 100%; Rabbit: 100%; Guinea pig: 100%
Protein Families:	Druggable Genome, Transcription Factors


[View online »](#)

Product images:



WB Suggested Anti-Tbr1 Antibody Titration: 0.2-1 ug/ml; Positive Control: Mouse Uterus



Mouse Brain