

Product datasheet for **TA341815**

TAL2 Rabbit Polyclonal Antibody

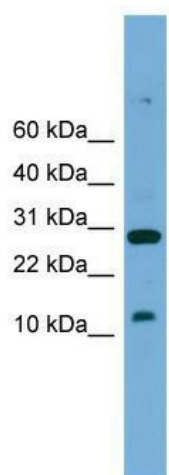
Product data:

Product Type:	Primary Antibodies
Applications:	WB
Recommended Dilution:	WB
Reactivity:	Mouse
Host:	Rabbit
Isotype:	IgG
Clonality:	Polyclonal
Immunogen:	The immunogen for anti-Tal2 antibody: synthetic peptide corresponding to a region of Mouse. Synthetic peptide located within the following region: INFLVKVLGEQSLHQTGVAAQGNILGLFPPKTRLPDEDDRTLLNDYRVPS
Formulation:	Liquid. Purified antibody supplied in 1x PBS buffer with 0.09% (w/v) sodium azide and 2% sucrose.
Concentration:	lot specific
Conjugation:	Unconjugated
Storage:	Store at -20°C as received.
Stability:	Stable for 12 months from date of receipt.
Predicted Protein Size:	12 kDa
Gene Name:	T-cell acute lymphocytic leukemia 2
Database Link:	NP_005412 Entrez Gene 21350 Mouse Q16559
Background:	The function of this protein remains unknown.
Synonyms:	bHLHa19; T-cell acute lymphocytic leukemia 2
Note:	Immunogen Sequence Homology: Mouse: 100%; Rat: 93%; Human: 93%; Bovine: 93%; Dog: 86%; Horse: 79%; Rabbit: 77%
Protein Families:	Druggable Genome



[View online »](#)

Product images:



WB Suggested Anti-Tal2 Antibody Titration: 0.2-1 ug/ml; Positive Control: Mouse Small Intestine