

## Product datasheet for **TA341812**

### Nkx1-2 Rabbit Polyclonal Antibody

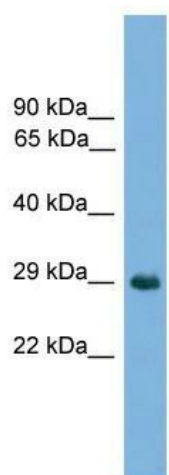
#### Product data:

Product Type:	Primary Antibodies
Applications:	WB
Recommended Dilution:	WB
Reactivity:	Mouse
Host:	Rabbit
Isotype:	IgG
Clonality:	Polyclonal
Immunogen:	The immunogen for anti-Nkx1-2 antibody: synthetic peptide directed towards the middle region of mouse Nkx1-2. Synthetic peptide located within the following region: AHQPERWQGVHEGSPEARAVAVGTEESGAELPASPGSPGSPRRRRRAE
Formulation:	Liquid. Purified antibody supplied in 1x PBS buffer with 0.09% (w/v) sodium azide and 2% sucrose.
Concentration:	lot specific
Conjugation:	Unconjugated
Storage:	Store at -20°C as received.
Stability:	Stable for 12 months from date of receipt.
Predicted Protein Size:	32 kDa
Gene Name:	NK1 transcription factor related, locus 2 (Drosophila)
Database Link:	<a href="#">NP_033149</a> <a href="#">Entrez Gene 20231 Mouse</a> <a href="#">P42580</a>
Background:	May function in cell specification, particularly inThe CNS.
Note:	Immunogen Sequence Homology: Mouse: 100%; Rat: 92%; Pig: 86%



[View online »](#)

## Product images:



WB Suggested Anti-Nkx1-2 Antibody Titration:  
0.2-1 ug/ml; ELISA Titer: 1:1562500; Positive  
Control: Mouse Lung