

Product datasheet for **TA341811**

Prrx2 Rabbit Polyclonal Antibody

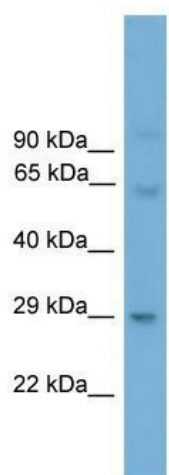
Product data:

Product Type:	Primary Antibodies
Applications:	WB
Recommended Dilution:	WB
Reactivity:	Mouse
Host:	Rabbit
Isotype:	IgG
Clonality:	Polyclonal
Immunogen:	The immunogen for anti-Prrx2 antibody: synthetic peptide corresponding to a region of Mouse. Synthetic peptide located within the following region: DPPAPGPGPPPAPGDCAQARKNFSVSHLLDLEEVAAGRRAAGPVSGPAE
Formulation:	Liquid. Purified antibody supplied in 1x PBS buffer with 0.09% (w/v) sodium azide and 2% sucrose. <i>Note that this product is shipped as lyophilized powder to China customers.</i>
Concentration:	lot specific
Conjugation:	Unconjugated
Storage:	Store at -20°C as received.
Stability:	Stable for 12 months from date of receipt.
Predicted Protein Size:	26 kDa
Gene Name:	paired related homeobox 2
Database Link:	NP_033142 Entrez Gene 20204 Mouse Q06348
Background:	The function of This protein remains unknown.
Synonyms:	MGC19843; PMX2; PRX-2; PRX2
Note:	Immunogen Sequence Homology: Rat: 100%; Mouse: 100%



[View online »](#)

Product images:



WB Suggested Anti-Prrx2 Antibody Titration: 0.2-1 ug/ml; Positive Control: Mouse Spleen