

Product datasheet for **TA341808**

c Rel (REL) Rabbit Polyclonal Antibody

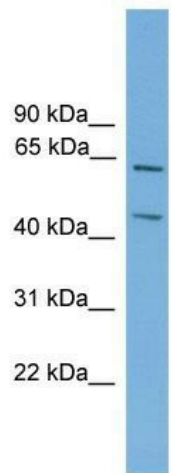
Product data:

Product Type:	Primary Antibodies
Applications:	WB
Recommended Dilution:	WB
Reactivity:	Mouse, Human
Host:	Rabbit
Isotype:	IgG
Clonality:	Polyclonal
Immunogen:	The immunogen for anti-Rel antibody: synthetic peptide corresponding to a region of Mouse. Synthetic peptide located within the following region: KAILEPVTVKMQLRRPSDQEVSESMDFRYLPDEKDAYGNKSKKQKTTLIF
Formulation:	Liquid. Purified antibody supplied in 1x PBS buffer with 0.09% (w/v) sodium azide and 2% sucrose. <i>Note that this product is shipped as lyophilized powder to China customers.</i>
Concentration:	lot specific
Conjugation:	Unconjugated
Storage:	Store at -20°C as received.
Stability:	Stable for 12 months from date of receipt.
Predicted Protein Size:	65 kDa
Gene Name:	REL proto-oncogene, NF-kB subunit
Database Link:	NP_002899 Entrez Gene 19696 Mouse Entrez Gene 5966 Human Q04864
Background:	The function of This protein remains unknown.
Synonyms:	C-Rel
Note:	Immunogen Sequence Homology: Rat: 100%; Mouse: 100%; Pig: 93%; Rabbit: 93%; Guinea pig: 93%; Dog: 86%; Horse: 86%; Human: 86%; Bovine: 86%
Protein Families:	Druggable Genome, Transcription Factors



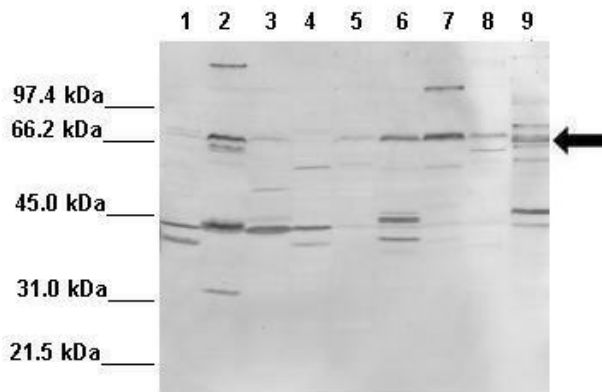
[View online »](#)

Product images:



WB Suggested Anti-Rel Antibody Titration: 0.2-1 ug/ml; Positive Control: Mouse Lung

REL



WB Suggested Anti-REL Antibody ; Positive Control: Lane 1: 100ug mouse liver, Lane 2: 100ug mouse brain, Lane 3: 100ug mouse heart, Lane 4: 100ug mouse kidney, Lane 5: 100ug mouse lung, Lane 6: 100ug mouse thymus, Lane 7: 100ug mouse spleen, Lane 8: 100ug mouse t