

Product datasheet for **TA341805**

Npas2 Rabbit Polyclonal Antibody

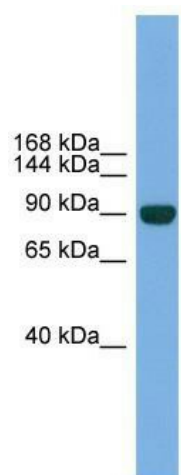
Product data:

Product Type:	Primary Antibodies
Applications:	WB
Recommended Dilution:	WB
Reactivity:	Mouse
Host:	Rabbit
Isotype:	IgG
Clonality:	Polyclonal
Immunogen:	The immunogen for anti-Npas2 antibody: synthetic peptide corresponding to a region of Mouse. Synthetic peptide located within the following region: VSYADVRVERRQELALEDPPTTEAMHPSAVKEKDSLSLEPPQPFNALDMGAS
Formulation:	Liquid. Purified antibody supplied in 1x PBS buffer with 0.09% (w/v) sodium azide and 2% sucrose. <i>Note that this product is shipped as lyophilized powder to China customers.</i>
Concentration:	lot specific
Conjugation:	Unconjugated
Storage:	Store at -20°C as received.
Stability:	Stable for 12 months from date of receipt.
Predicted Protein Size:	91 kDa
Gene Name:	neuronal PAS domain protein 2
Database Link:	NP_032745 Entrez Gene 18143 Mouse P97460
Background:	BMAL1-NPAS2 heterodimers activate E-box element (3'-CACGTG-5') transcription of a number of proteins of the circadian clock. This transcription is inhibited in a feedback loop by PER, and also by CRY proteins.
Synonyms:	bHLHe9; FLJ23138; MGC71151; MOP4; PASD4
Note:	Immunogen Sequence Homology: Mouse: 100%; Rat: 92%; Bovine: 85%; Pig: 77%



[View online »](#)

Product images:



WB Suggested Anti-Npas2 Antibody Titration: 0.2-1 ug/ml; Positive Control: Mouse Muscle