

Product datasheet for **TA341803**

Npas1 Rabbit Polyclonal Antibody

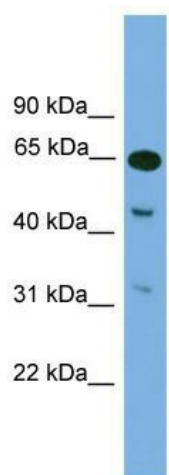
Product data:

Product Type:	Primary Antibodies
Applications:	WB
Recommended Dilution:	WB
Reactivity:	Mouse
Host:	Rabbit
Isotype:	IgG
Clonality:	Polyclonal
Immunogen:	The immunogen for anti-Npas1 antibody: synthetic peptide directed towards the middle region of mouse Npas1. Synthetic peptide located within the following region: LPAIVSQEEPSRPGPEPTEEEEPPVDGKQAVPADQDKDKDPQARGKRIKVE
Formulation:	Liquid. Purified antibody supplied in 1x PBS buffer with 0.09% (w/v) sodium azide and 2% sucrose. <i>Note that this product is shipped as lyophilized powder to China customers.</i>
Concentration:	lot specific
Conjugation:	Unconjugated
Storage:	Store at -20°C as received.
Stability:	Stable for 12 months from date of receipt.
Predicted Protein Size:	64 kDa
Gene Name:	neuronal PAS domain protein 1
Database Link:	NP_032744 Entrez Gene 18142 Mouse P97459
Background:	Npas1 may control regulatory pathways relevant to schizophrenia and to psychotic illness. Npas1 may play a role in late central nervous system development by modulating EPO expression in response to cellular oxygen level.
Synonyms:	bHLHe11; MOP5; PASD5
Note:	Immunogen Sequence Homology: Mouse: 100%; Rat: 86%



[View online »](#)

Product images:



WB Suggested Anti-Npas1 Antibody Titration: 0.2-1 ug/ml; ELISA Titer: 1:312500; Positive Control: Mouse Brain